

CANAAN Realty
 Since 2003
 031-691-0079
 Facebook.com/RealtyCANAAN
 www.CANAANRealty.net

STARS AND STRIPES
 Community Publication

KOREA

VOLUME 12 NO. 20

FEBRUARY 1 – FEBRUARY 14, 2024

SUBMIT STORIES TO: KOREA@STRIPE.COM • KOREA.STRIPE.COM • FACEBOOK.COM/STRIPEPACIFIC

FREE

STARS AND STRIPES
CAST YOUR VOTE!
 VOTE FOR YOUR FAVORITES!

STARS AND STRIPES
BEST OF THE PACIFIC
 2024

YOU COULD WIN
 A GIFT CARD WORTH UP TO
\$300!



Vote online by
MARCH 23

BESTOFPACIFIC.STRIPE.COM

Valentine's Day in Korea >> Pages 8-9

Korea's wonderful Winter festivals
 Pages 4-6



INSIDE INFO

KOREA KIDS' CORNER



A SWEET ESCAPE TO STRAWBERRY FARMS!
 PAGES 12-13

H&R BLOCK

HUMPHREYS Tel: 070-7727-6100
 OSAN AB (K-55) Tel: 070-7597-0132
 CAMP WALKER Tel: 070-7725-9887
 ITAEWON OFFICE Tel: 02-795-7555
 www.hrblock.kr


Military children tell us your story!

Hey, all you kids in the military community need to read this. Seriously! So, please put down your iPad, iPhone or other digital device for the next couple of minutes. You'll survive, and I promise no one will take them.

Now that I have your attention, I want to give you a little job. No, wait! Don't stop reading! I'm not going to ask you to clean your room! I'm simply going to give you the opportunity to be heard by tens of thousands of people. Seriously! You see, April is the Month of the Military Child, and for the 13th straight year, the Stars and Stripes community publications are dedicating it to you, the children of our men and women in uniform.

Each Stripes Okinawa, Stripes Japan, Stripes Korea and Stripes Guam issue in April will contain your stories, poems, drawings and photos about what life is like as a military child.

SEE MOMC ON PAGE 2



MON-SUN (07:00-20:00)
 Breakfast & Lunch
 +82-10-8288-0865

SAVORY RESTAURANT
 1 minute from Yoon Gate, Camp Humphreys



STARS AND STRIPES

www.stripes.com

Max D. Lederer Jr.
Publisher

Laura Law
Chief Operating Officer

Lt. Col. Marci Hoffman
Commander

Michael Ryan
Chief of Staff

Scott Foley
Revenue Director

Chris Verigan
Engagement Director

Marie Woods
Publishing and Media Design Director

Chris Carlson
Publishing and Media Design Manager

Eric Lee
Advertising and Circulation Manager

Enrique "Rick" W. Villanueva Jr.
Korea Area Manager

Jinsun Song
Operations Manager

Kentaro Shimura
Production Manager

Rie Miyoshi
Engagement Manager

Denisse Rauda
Publishing and Media Design Editor

Publishing and Media Design Writers

Shoji Kudaka

Hyemin Lee

Luis Samayoa

Takahiro Takiguchi

Layout Designers

Kazumi Hasegawa

Mamoru Inoue

Yuko Okazaki

Kayoko Shimoda

Multimedia Consultants

Max Genao

Doug Johnson

Hans Simpson

Chae Pang Yi

Benjamin Yoo

Gianni Youn

Robert Zuckerman

Graphic Designers

Yukiyo Oda

Kenichi Ogasawara

Yosuke Tsuji

Sales Support

Ji Young Chae

Dong Ju Lee

Yoko Noro

Yusuke Sato

Kanna Suzuki

Saori Tamaaha

Toshie Yoshimizu

For feedback and inquiries,
contact MemberServices@Stripes.com

To place an ad, call DSN 755-2255
korea.stripes.com/contact

MOMC:
We're here for you!

CONTINUED FROM PAGE 1

For those children who are part of the military community overseas but not technically a military child, we want to hear from you, too. You and your Department of Defense civilian parents are also a key part of the military community. So, what's life like as a military kid? Tell us. And after you share with us, your submission will be posted on our special Month of the Military website: [Militarychild.Stripes.com](https://militarychild.stripes.com) and could appear in at least one weekly paper.

We are giving you a platform to say what you want. Of course, to have your say, you have to write, type or draw it. You can be funny or serious. You can write a paragraph or a longer story (250-word maximum, please). Whatever you do, be yourself. Stand up and be heard.

We get thousands of submissions a year, so for stories to run in the paper, they must be submitted by April 15. But no matter when they are submitted, they will be posted on the website. As we approach another April, our team is ready for the onslaught. In fact, we're already receiving submissions.

By the way, like every year, we've been in touch with teachers across the Pacific who are using this as a class project. So be ready for that. For those of you who haven't participated in our annual salute, we hope to hear from you this year.

Stars and Stripes is very proud to serve the military community, and it's an honor to spotlight its resourceful group of children.

We can't wait to hear from you!

Chris Carlson,
Publishing and Media Design Manager
Stars and Stripes

Stories must be submitted by April 15 to appear in Stripes Korea!



Car Buying, Fully Loaded

- Get a decision in seconds on great-rate auto loans¹
- Shop, compare and get up-front pricing through our Car Buying Service, powered by TrueCar®
- Learn more about your vehicle's history with CARFAX®²
- See if you could save on auto insurance from Liberty Mutual®, made available through TruStage®³
- Explore **FREE** trial subscriptions to SiriusXM's Platinum Plan

Terms and conditions apply. **Learn more at** navyfederal.org/carbuying.⁴

NAVY FEDERAL Credit Union

Our Members Are the Mission



Navy Federal Credit Union is federally insured by NCUA. ¹Credit and collateral subject to approval. ²CARFAX is a registered trademark of CARFAX, Inc. ³TruStage® Auto & Home Insurance Program is made available through TruStage Insurance Agency, LLC and issued by leading insurance companies. The insurance offered is not a deposit, and is not federally insured, sold or guaranteed by Navy Federal. Product and features may vary and not be available in all states. Discounts are not available in all states, and discounts vary by state. Certain discounts apply to specific coverages only. To the extent permitted by law, applicants are individually underwritten; not all applicants may qualify. Navy Federal Credit Union is in no way responsible for any products or services provided by or through TruStage, Liberty Mutual or their affiliates, subsidiaries and insurance company partners. AUT-4210544.1-0122-0224 ⁴Navy Federal Credit Union is in no way responsible for any product, service, purchase or lease provided by or through CARFAX, TruStage, Liberty Mutual, SiriusXM or the Navy Federal Car Buying Service operated by TrueCar. © 2022 Navy Federal NFCU 14083 (2-22)



DESIGN YOUR FUTURE

Global Citizenship

Integrity

Adaptability

Balance in Life

Empowerment



Korea International School

Pangyo Campus

Seoul Campus

www.kis.or.kr

www.kisseoul.org



Explore Korea's winter wonderland at 6 fun festivals

BY HYEMIN LEE,
STRIPES KOREA

Korea's winter is well underway and there are plenty more activities for you to enjoy and create unforgettable memories with friends and family. The weather can be chilly, but you can warm up with some amazing snacks at

any of the many winter festivals planned for the season. Make plans to embrace the season and head to these fun events where snow and ice are a main attraction. You still have plenty of chances to enjoy Korea's winter in February at these six great festivals offering warm snacks and enjoyable activities! lee.hyemin@stripes.com



Photos by Cheongyang Alps Village



Cheongyang Alps Village Festival (청양 알프스마을 축제)

Social media has hyped up the Cheongyang Alps as a must-go winter destination and the alps-themed festival is a popular event to attend. Enter a winter kingdom with beautiful ice and snow sculptures, including igloos perfect for some stunning photos. In the evening, the ice village is illuminated with star lights, creating a magical, romantic vibe.

There are also other fun activities to explore, including snow and ice sledding, ziplining, and ice fishing, but they require extra fees. You can also savor a variety of winter snacks like roasted sweet potatoes and chestnuts in front of a warm fire. Parking is free, but it's recommended to visit near opening hours, especially on weekends. Ice and snow displays' condition can vary depending on weather, so visit on a cold day.

ADDRESS: 223-35 Cheonjangho-gil, Cheongyang-gun, Chungcheongnam-do

DATE: Through Feb. 18

HOURS: 9 a.m. - 8 p.m. (Weekdays) / 9 a.m. - 9 p.m. (Weekends)

PHONE: 041-942-0797

TICKETS: Admission 9,000 won / Sleds 20,000 won / Zipline 10,000 won / Free for those under 36 months



NAVER MAP



Photos by Yangpyeong Sumi Village

Yangpyeong Ice Fishing Festival

(양평빙송어축제)

Sumi Village is a picturesque spot with sweeping mountains and crystal water reservoirs. Every winter season the village hosts its famous Yangpyeong Ice Fishing Festival. Visitors come from all over to enjoy a variety of activities, including, of course, ice fishing. Other activities at the festival include barehand trout catching, drone ice fishing, snow and ice sledding, kite flying, and even ATV rides. The festival even offers indoor ice fishing inside warm domes.

For food, you'll love the many hot dishes like tteokbokki, fish cake soup, various grilled meats, and hotteok pancakes.

Sumi Village is also famous for its strawberry picking where you can pick plump and lovely strawberries and take home a pack with a 18,000 won fee. You can visit anytime without reservations, and if you purchase tickets through the website or Naver, you can enjoy a 20-30 percent discount. There is a wide space for parking.

ADDRESS: Sumi Village Visitor Center, 55-2 Gopdani-gil, Yangpyeong-gun, Gyeonggi-do

DATE: Through Feb. 26.

HOURS: 9 a.m. - 5 p.m.

PHONE: 031-775-5205

WEBSITE: 양평빙송어축제 (winterfestival.kr)

TICKETS: About 19,000 won - 36,000 won (Depending on activities)



NAVER MAP



Photos by Cheongpyeong Snow-Ice Trout and Smelt Festival

Cheongpyeong Snow-Ice Trout and Smelt Festival

(청평 설빙 송어빙어축제)

This festival in the northern part of South Korea runs until early March. Surrounded by picturesque mountains, lakes, and the Bukhangan-gang River, it attracts numerous visitors thanks to its proximity to various leisure options nearby. The festival mainly features smelt ice fishing, barehand trout catching, and ice sledding. Fishing equipment can be purchased on-site, and instructions for ice fishing are provided by staff. For parents who may not participate in activities but plan to watch their children, entry is allowed without extra fees. Parking is available.

While the festival program may feel simpler compared to other winter festivals, it is known as an ideal destination for a winter gateway due to the diverse travel options nearby. Other attractions in this area include Gapyeong Four Seasons Sled Park, Nami Island, Petite France, the Morning Calm Arboretum, Gapyeong Rail Park and more.

ADDRESS: 119-1 Gangbyeon-ro, Gapyeong-gun, Gyeonggi-do

DATE: Through Mar. 3 (Dates may vary depending on the weather)

HOURS: 8 a.m. - 5 p.m.

PHONE: 031-584-2755

PRICE: 10,000 won - 30,000 won
(Free for children under 7 for trout fishing, free for children under 6 for smelt fishing)



NAVER MAP



Photos by Korea Tourism Organization

Anseong Ice Fishing Festival

(안성빙어축제)

This festival takes place at Gwanghyewon Reservoir, the largest reservoir in Anseong City. It is an ideal location for experiencing ice fishing in a fresh and clean reservoir. The festival site is conveniently located within an hour drive from Camp Humphreys and Osan Air Base.

For smelt fishing, it's recommended to dress warmly since you may spend a long time on the ice. You'll need a small chair and a container for the smelt. You can pay 26,000 won to rent all the items for ice fishing on site or bring your own. After catching smelt, for 5,000 won fee the staff will fry them for you on the spot. Also, various winter snacks, including warm fish cake soup and other hot treats are available. Visitors can also enjoy ice sledding with plastic and wooden sleds available.

The event is cash only, so make sure to bring enough won. Parking is available.

ADDRESS: 451 Dugyo-ri, Anseong-si, Gyeonggi-do

DATE: Through Feb. 12 (Closed Feb. 9-10)

HOURS: 9 a.m. - 5 p.m.

PHONE: 031-674-4528

TICKETS: 10,000 won for one person / 50 percent discount for accompanying individuals / Free for children under 5 years old and individuals over 80 years old.



NAVER MAP

Things to know for enjoying winter festivals

- It is recommended to attend on colder days since ice and snow can be affected by weather. Please note that events may be canceled on rainy days. The best way to confirm the festival schedule is to call or check their website before your trip.
- For ice-fishing, most equipment can be purchased on-site, but buying small

items such as patio chairs, containers and hot packs at affordable stores like Daiso can be a good option.

- If you plan to catch trout, it's recommended to bring towels and extra clothes.
- For a better chance of catching smelt through ice fishing, it's recommended to visit the spot at opening hours.

SEE FESTIVALS ON PAGE 6

FESTIVALS: Winter wonderland

CONTINUED FROM PAGE 5



Photos by Korea Tourism Organization

Pocheon Baekun Mountain Stream Winter General Festival (포천 백운계곡 동장군 축제)

Held in the Baekun mountain stream of Pocheon, the northern region of Korea, this festival is a large-scale winter event.

Families with children can enjoy a variety of exciting activities such as ice fishing for trout and smelt, exploring igloos, snow sledding, traditional sledding, and ice skating. The festival also boasts traditional activities such as making traditional wooden crafts, makgeolli (Korean rice wine), feeding animals and playing traditional folk games. Additionally, there are more amusement rides like mini biking and mini trains and diverse winter snack options, including roasted sweet potatoes, chestnuts, and BBQ. Parking is available.

ADDRESS: 259 Pohwa-ro, Pocheon-si, Gyeonggi-do

DATE: Through Feb. 12

HOURS: 9 a.m. - 5 p.m.

PHONE: 031-536-9917

WEBSITE: 포천백운계곡 동장군축제 (dongjangkun.co.kr)

TICKETS: Admission 1,000 won /
Fishing: 15,000 won - 30,000 won
/ All ice experience ticket (sledding, igloo experience, traditional games, etc.) 35,000 won



NAVER MAP



Photo by Pocheon Baekun Mountain Stream Winter General Festival

Pocheon Sanjeong Lake Sledding Festival (포천 산정호수 썰매 축제)

At this festival, you can enjoy thrilling rides on the snow with a variety of cute sleds decorated to look like Santa's sleigh, ducks, penguins, Winnie the Pooh and more. This festival is less than 20 minutes away from the Pocheon Baekun Mountain Stream Winter General Festival and many visitors make it a day to visit both.

ADDRESS: 108, Sanjeonghosu-ro 411beon-gil,

Pocheon-si, Gyeonggi-do

DATE: Through Feb. 12

HOURS: 10 a.m. - 5 p.m.

PHONE: 010-3024-6222

TICKETS: 12,000 won for renting a special sled for 30 minutes



NAVER MAP



Photos by Korea Tourism Organization



Speakin' Korean

BY HYEMIN LEE,
STRIPES KOREA

for the winter season

- Winter: Gyeoul (겨울)
- Snow: Nun (눈)
- Ice: Eoreum (얼음)
- Festival: Chukje (축제)
- Snack: Gansik (간식)
- Cold: Chuun (추운)
- Warm: Ttatteutan (따뜻한)

- It's snowing: Nuni naeryeo-yo (눈이 내려요)
- It's cold: Chuwo-yo (추워요)
- It's beautiful: Areumdawo-yo (아름다워요)
- I need something warm:
Ttatteutan-ge pilyo-haeyo (따뜻한게 필요해요)
- I love winter snacks!:
Gyeoul gansik joahaeyo! (겨울 간식 좋아해요)





Delicious desserts tempt the tastebuds.

Botanic ambience comes with coffee at Timeslice

STORY AND PHOTOS BY
CHRISTOPHER GREEN,
STARS AND STRIPES
Published: December 28, 2023

On my first time through the doors at Timeslice Café & Bakery in Pyeongtaek, the first word that came to mind was luxury. I knew this visit would cost me more than a trip to Starbucks.

Timeslice has two spacious floors. The vibe on the first floor is rather dark, but the second floor is an eye-catching construction of glass that admits a bounty of natural light and is filled with plants and flowers. It

reminded me of a greenhouse or a botanical garden.

The café also has an outdoor patio with a view of the Pyeongtaek city skyline.

On the first floor, patrons find a huge selection of pastries and desserts and plenty of seats. Grab yourself a pair of tongs and a tray and help yourself.

I chose croissants, a grilled cheese sandwich and a croissant sandwich, along with an iced caramel macchiato, and made my way to the checkout counter.

The drink menu hanging behind the counter lists everything in English and

Korean to make ordering easier. The food was spectacular, especially the croissants, which were sweet and buttery.

This fabulous hilltop bakery has two entrances, one on the first floor and one below. The first-floor parking lot is quite small and sometimes hard to negotiate. I recommend using the second-floor parking lot. It's bigger and easier to exit.

This café is a great place to go for good food and drinks. The atmosphere is calm and inviting, and offers a place to relax with a quick bite. It's open every day from 9:30 a.m. to 9:30 p.m.

green.christopher@stripes.com
@ChrisJGreen8



A caramel macchiato, croissants, grilled cheese sandwich and croissant sandwich.

Location: 658-21, Jukbaek-dong, Pyeongtaek-si, Gyeonggi-do

Directions: a 25-minute drive from Camp Humphreys

Hours: Open 9:30 a.m. to 9:30 p.m. daily

Prices: all drinks are between \$4 and \$8; pastries and desserts are \$4 to \$11

Dress: Casual

Phone: 031-655-0055



Instagram



20 Nights in Seoul

Room package

*The only AFRC resort in Asia,
Located in the heart of Seoul, Korea*

- Easy access to all famous spots in Seoul
- Spacious guestrooms
- Access to health club, indoor pool and jacuzzi
- American cuisine
- Events year round



BOOK NOW

\$1,799

DOUBLE OCCUPANCY
IN A STANDARD ROOM



CALL US FOR MORE INFO

Call DSN: #315-738-2222
or #02-790-0016 ext.1



reservations@dragonhilllodge.com



www.dragonhilllodge.com



USAG YONGSAN

Valentine's Day in Korea

February not only month love is in the air

BY HYEMIN LEE,
STRIPES KOREA

Like most Western countries, Korea celebrates Valentine's Day as a big romantic holiday on Feb. 14, albeit with a Korean twist.

Here in Korea, it's women who gift men chocolate and gifts on Valentine's Day. The unofficial holiday isn't only for couples as it's also a day for single women to be brave and confess their feelings to their crush. At middle and high schools, girls also use the day as an excuse to make a love confession to their crushes.

It's true that Valentine's Day is the start of many couples' love stories.

One month later, on March 14, it's the men's turn to break out the sweets and charm on White Day. This reciprocal holiday was actually an invention by a confectionary company in Japan decades ago to sell more sweets. The custom has since spread to other East Asian countries.

Both romantic holidays stir up big celebrations in Korea. Most stores have large displays of chocolates, candies, other sweets and flowers. You'll see plenty of businesses targeting customers with special products as these holidays approach.

Forever alone in April

If, despite the first two romantic days of the year, you still find yourself alone, then Black Day on April 14 is for you.

It's called Black Day because it's a depressing day where lonely singles are meant to gather in black attire, eat black bean sauce noodles (jjajang-myeon 짜장면) and drink Americano coffees.

This day is for those who were not successful in finding a boyfriend or girlfriend. Koreans tend to see being single as a sad and depressing thing. Some businesses hold events to invite singles to eat black bean sauce noodles together. Lonely singles attend the event in hopes of finding their match among other lonely singles.



Love celebrated monthly

Though Valentine's Day and White Day are big in Korea, the celebration of love is taken a step further with other romantically-related holidays on the 14th of every month.

In an ideal world, singles have coupled up by April 14, so the rest of the holidays are to celebrate being a couple in love!

■ May 14 – Rose Day

A day to give a bouquet of roses to your partner.



■ June 14 – Kiss Day

A day to kiss your partner to express affection.



■ July 14 – Silver Day

A day to exchange "couple rings," which are silver rings and a symbol of commitment.



■ Aug. 14 – Green Day

This is a day to pack a picnic and drink Korean alcoholic drinks together.



■ Sept. 14 – Photo Day

A day to take nice photos together.

■ Oct. 14 – Wine Day

A day to drink red wine together.



■ Nov. 14 – Movie Day

A day to watch a good movie together.



■ Dec. 14 – Hug Day

A day to give your partner a warm embrace in the chilly winter.

■ Jan. 14 – Diary Day

To make a plan for the new year together, couples exchange a yearly planner.



Another unofficial and commercial holiday is Pepero Day on Nov. 11. Pepero is a popular snack of thin cookie sticks that look like the number one, so four together form 11/11 or Nov. 11 on the calendar. On Nov. 11, Pepero packs are given to friends and family.



Though the 12 Korean love holidays make it seem like Koreans are keen about celebrating couples, you don't need to worry if you're single! Besides Valentine's Day, White Day, and Pepero Day, the other love holidays are in fact minor holidays that most Koreans don't celebrate.

In any culture, expressing love for someone is significant matter because everyone wants to love and be loved. I think it's a cute that the 12 love holidays show that Korean's wish to make every month special with their partner.

lee.hyemin@stripes.com





Dating culture



As Korea's 12 love holidays show, love is a great interest in Korean society.

The dating culture here is a bit different than what Americans are used to. While you might find many young Koreans are more westernized, most still follow local dating manners.

If you're dating a Korean, you should know some basic manners and etiquette to follow. Here are the six interesting facts of the Korean dating culture that are fun and helpful to know.

1. Romantic holidays/anniversaries

There are important romantic holidays that couples celebrate by giving nice gifts and enjoying a romantic date: Christmas, Valentine Day, White Day, year anniversary and 100 days anniversary.

The 100 days anniversary is a big event for couples in Korea. Many couples even celebrate every 100 days they've been together plus the yearly anniversaries.

Not all Koreans find celebrating anniversaries important, so ask your partner what they expect.

2. Make it official

If you want to keep dating, it's important to make it official. Koreans count 100 days from the day you officially become a couple, so it's important to ask

your partner to be your boyfriend/girlfriend.

After between three to five dates, if a person, usually the guy, doesn't ask their date to make it official, the other will see it as a huge red flag and think it isn't going to work out.

Many Americans tend to keep dating lightly at first and build a connection as they get to know each other. However, most Koreans like to secure the commitment first, then learn about each other and build intimacy while officially dating. Trying to convince a Korean partner to "slowly get to know each other, then see where it goes" won't work most of the time because Koreans hate ambiguous relationships.

3. Saying 'I love you' too soon

You may be surprised when your Korean partner says "I love you" sooner than you expect. Because most Koreans usually decide to commit to their partner at an early stage of dating, it's natural to say "I love you" to each other.

Also, in Korean culture, there is a term called "Aegyo (애교)," which is a display of affection through behaviors, talking, voice, and facial expression in a very sweet and cute way. Aegyo is a way to be flirtatious in Korean dating culture. So, when your partner says "I love you" too soon while displaying Aegyo (애교), it's just a way to be sweet.

4. Two of a kind

Couples often shop together on romantic holidays and buy matching shoes, clothes and accessories. It is especially common for young couples to wear couple rings without plans to wed. Wearing a couple ring is a symbol of commitment as a couple and usually is bought on the 100-day anniversary or one-year anniversary.

5. Parents' opinion matters

Most Koreans introduce their partner to their parents only when they are in a serious relationship that is leading to marriage. Parents' opinion can greatly affect the relationship since the majority of Koreans believe marriage isn't just the union of two people but of two families.

6. Texting all the time

Koreans are huge fans of texting and being glued to their smartphone, but it gets even worse when they are in a relationship. Being able to keep in touch and text back quickly is one of the important traits many Koreans expect from their partner. Your Korean partner possibly wants to know every single move you make in a day. Many Koreans see being more closely related to a partner's life and sharing a daily life as a significant way of expressing love.



Useful Korean phrases for love

- Joahae(좋아해): I like you / I like that
- Saranghae (사랑해): I love you / I love that
- Sarang(사랑): Love
- Ha-tuh (하트) / Simjang-organ (심장): Heart
- Aegyo (애교): a cute display of affection toward a partner, friends, family

Useful Korean phrases for dating

- Date (데이트): Dating / Going out
- Date sincheong-hada (데이트 신청하다): To ask a person out for a date
- Gobaek-hada (고백하다): To ask a person out (to be in a relationship) / To confess
- Sagwi-da (사귀다): To be boyfriend/girlfriend with / To date
- Yeoja/Namja-chingu isseoyo? (여자/남자친구 있어요?): Do you have a girl/boyfriend?
- Uri Sagwija (우리 사귀자): Let's make it official (*informal)
- Na-rang Sagwillae-yo?:(나랑 사귄래요?): Would you be my boy/girlfriend? (*formal)

Titles

- Aein (애인) / Yeonin (연인): Lover / Partner / Girlfriend/ Boyfriend
- Yeoja-chingu (여자친구): Girlfriend
- Namja-chingu (남자친구): Boyfriend
- Yeoja (여자): Girl / Woman
- Namja (남자): Guy / Man
- Friend (친구): Chingu
- Oppa (오빠): A honorific title that women call older men and is often used to present Aegyo to their older boyfriend.
- Jagi (자기) / Yeobo (여보): Honey/ Boo / Sweetheart
- Aegi (애기): Baby / Boo (The way to call a younger girlfriend very affectionately)

*Try to put "ya" behind of those words: Jagi-ya, Aegi-ya



Illustrations by Hyemin Lee, Stripes Korea



Romance-filled trip to K-drama filming locations

KOREA TOURISM ORGANIZATION

In 2023, two K-dramas rose to fame on Netflix! They were none other than “King the Land” and “See You in My 19th Life,” romantic dramas that featured all-star casts with interesting storylines. If you watched the dramas, the next step is to visit the filming locations. Stand where the stars stood to feel the romantic ambiance!

1. King the Land

“King the Land” tells the love story of Gu Won (played by Lee Jun-ho), the heir to King Hotel who is going through an inheritance dispute, and Cheon Sa-rang (played by Lim Yoon-a), a staff member working at the hotel. The drama drew extreme interest from the moment the cast was announced, since Lee Jun-ho and Lim Yoon-a are famous as members of K-pop groups 2PM and Girls Generation, respectively. The chemistry between the two only made the anticipation for the drama grow as each episode was released.



Sono Calm Jeju

Early in the drama, Gu Won and Sa-rang record a promotional video for King Hotel. Prior to this, the two often butted heads as Gu Won hates smiling, while Sa-rang is always smiling. However, looking out at the sunset, they share a moment with the same emotion.

This beautiful scene that makes you want to jump into your screen was filmed at Sono Calm Jeju, a resort in Seogwipo. The scene was recorded near the resort’s infinity pool. From here, you can enjoy the sunrise or sunset over the ocean, or take in the majestic Hallasan Mountain rising from the middle of the island. The resort also has a sauna, indoor swimming pool, and guestrooms in a

variety of types, making it the perfect accommodation for all visitors.

The Heart Tree photo zone where Gu Won and Sa-rang took a photo together is also quite famous at the resort. The tree branches overhead make a heart shape, with many couples stopping here to get the perfect shot. The area is open to everyone, not just resort guests, so it’s a great addition to all travel itineraries!

ADDRESS: 6347-17 Iljudong-ro, Seogwipo-si, Jeju-do (제주특별자치도 서귀포시 표선면 일주동로 6347-17)

ROOM RATES: Standard family twin room 140,000-350,000 won (4 people basis)

INQUIRIES: +82-2-1588-4888

RESERVATION WEBSITE: tripadvisor.com



Heart tree photo zone at Sono Calm Jeju.



Enjoying a bicycle date on Gapado Island.



Gapado Island

In the third episode, Gu Won and Sa-rang are forced to take shelter on an island due to unforeseen circumstances. They ride bicycles up to the observatory to look out over the island. Gu Won, who hates when people smile, tells Sa-rang to stop smiling, but she can’t help it because of her good nature. Secretly, Gu Won begins to feel conflicted each time he sees her beautiful smile.

This island episode was filmed on Gapado Island, a small island off the southern coast of Jeju. It takes just one hour and a half on foot or 30 minutes by bicycle to explore the whole island. In April, the whole island is a vibrant green color from the green barley fields. Visitors in June and July can enjoy colorful hydrangeas in full bloom, while fall visitors will be greeted by waves of orange cosmos. The island is only accessible via ferry from Unjin Port, so be sure to check the ferry schedule in advance.

UNJIN PORT

ADDRESS: 120 Choenamdanhaean-ro, Seogwipo-si, Jeju-do (제주특별자치도 서귀포시 대정읍 최남단해안로 120)

FERRY INFO

- Seven ferries operate to Gapado Port and Unjin Port each (last ferry bound for Unjin Port departs at 4:30 p.m.).
- Reserved tickets must be picked up on-site at least 40 minutes before ferry departure.
- On-site ticket sales close 10 minutes before ferry departure.
- Foreigners must present their passport or registration card.

OPERATING SCHEDULE: www.wonderfulis.co.kr/boarding_guide/time/

FARE (ROUND-TRIP): Adults 13,100 won / Children (ages 2 - elementary school student) 6,600 won

INQUIRIES: +82-64-794-5490

ONLINE RESERVATIONS: kkday.com



OPERATING SCHEDULE

GAPADO ISLAND BICYCLE RENTALS

LOCATION: 207 Gapa-ri, Seogwipo-si, Jeju-do (제주특별자치도 서귀포시 대정읍 가파리 207)

* 2-min-walk from Gapado Dock

PRICES: Single bicycle 5,000 won / Tandem bicycle 10,000 won (Cash or wire transfer only)



RESERVATION WEBSITE



Dae Jang Geum Park

Cheon Sa-rang played tour guide to a visiting Arabian prince. Falling for her beauty, the prince says he wants to do a traditional wedding ceremony with Sa-rang when touring the palace. Gu Won gets jealous and lies to the prince so that he can wear the traditional wedding clothes and do the ceremony with Sa-rang.

This scene, where you can feel their hearts beating, was filmed at Dae Jang Geum Park in Yongin. Started by “A Jewel in the Palace (2003),” one of the first big hallyu dramas, this park faithfully recreates traditional buildings and street views from the Three Kingdoms period to the Joseon

dynasty. The park has been used as a filming location for popular historical dramas “Mr. Sunshine (2018)” and “The Red Sleeve (2021),” as well as BTS’ Suga’s “Daechwita” music video.

ADDRESS: 25 Yongcheon drama-gil, Cheoin-gu, Yongin-si, Gyeonggi-do (경기도 용인시 처인구 백암면 용천드라마길 25)

OPERATING HOURS: March-October 9 a.m.-6 p.m. / November-February 9 a.m.-5 p.m. (Open all year round)

ADMISSION: Adults 9,500 won / Teenagers 8,000 won

INQUIRIES: +82-31-337-3241

WEBSITE: djgpark.imbc.com (Korean, English, Japanese, Chinese)



WEBSITE



Traditional wedding experience at Dae Jang Geum Park.



Gu Won and Cheon Sa-rang walking down the sea road by Tando Port.



Tando Port

The scene of Gu Won and Sa-rang walking along a road lined on both sides with a tidal mud flat, and large wind turbines in the distance was unforgettable. This is where Sa-rang gives a photo to Gu Won of his mother who he was separated from at a young age, and gives him the courage to find her again.

This scene was recorded at Tando Port in Ansan, Gyeonggi-do, famous for its sunset view. The paved road is covered in water when the tide rises, and then appears

as if by magic as the waters recede. If you want to walk along the road like Gu Won and Sa-rang did, then you’ll need to check the tide times on the day of your visit, as they change daily. It takes about 30 minutes to walk to the observation deck of Nueseom Island’s lighthouse. From here, you can enjoy a panoramic view of the beautiful sunset.

ADDRESS: 717-5 Seongam-dong, Danwon-gu, Ansan-si, Gyeonggi-do (경기도 안산시 단원구 선감동 717-5)

TIDE TIMES: www.khoa.go.kr



TIDE TIMES



2. See you in my 19th life

“See You in My 19th Life” is a fantasy romance drama that focuses on Ban Ji-eum (played by Shin Hye-sun), a girl who can remember her previous lives, as she sets out to reconnect with Moon Seo-ha (played by Ahn Bo-hyun), her love from her 18th life. With a main character who can remember her past lives, the drama is able to show Korea through a long period of time, with many different filming locations!



Sea caves of Chaeseokgang Cliffs

We first meet Ji-eun as she stands in cave opening out to the sea, wearing a light blue

dress. The contrast of the dark cave interior with the clear blue sky lends more mystery as she begins to tell the story of her life.

This scene was filmed by the sea cave of Chaeseokgang Cliff in Buan, Jeollabuk-do. This unique rock formation was created by waves endlessly eroding the softer rock sections of the cliff, showing the beauty and power of nature. The cave is extremely popular for taking silhouette photos. Because the cave is located on the cliff next to the ocean, you have to be very careful when climbing up the rocks. The cave is also inaccessible during high tide, so be sure to plan your visit accordingly.

ADDRESS: 1 Byeonsanhaebyeon-ro, Buan-gun, Jeollabuk-do (전라북도 부안군 변산해변로 1)

WEBSITE: jwcgeopark.kr

TIDE TIMES: www.khoa.go.kr

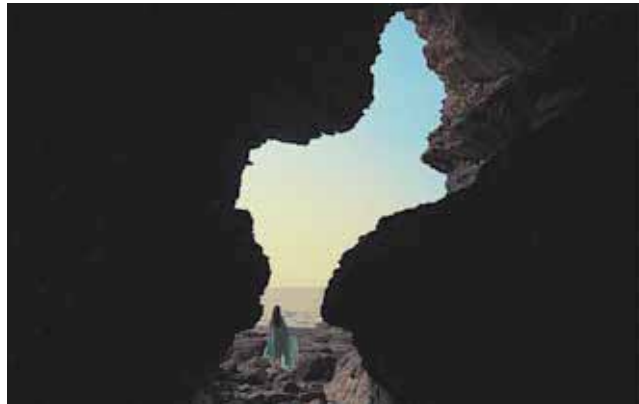
* Best time to enter the cave is the two hours when the tide is low.



WEBSITE



TIDE TIMES



Opening scene of “See You in My 19th Life,” recorded by the sea cave of Chaeseokgang Cliff.



Borinara Hagwon Farm

During a war in a previous life, Ji-eun loses her child and runs aimlessly before collapsing in a field of buckwheat. In that moment, she comes to realize that the hard times will pass, and she will continue to live in a new place.

This scene of unraveling the mystery was filmed at Borinara Hagwon Farm in Gochang, Jeollabuk-do. This large farm grows green barley in spring, sunflowers and cosmos in summer, and buckwheat in fall. The farm

hosts festivals during the peak of each season to enjoy the blooms to the full extent. The soft white buckwheat blossoms comforted Ji-eum, and will provide rest for your weary soul, too.

ADDRESS: 154 Hagwonongjang-gil, Gochang-gun, Jeollabuk-do (전라북도 고창군 학원농장길 154)

OPERATING HOURS: 9 a.m.-6:30 p.m.

ADMISSION: Free

INQUIRIES: +82-63-564-9897

INSTAGRAM: @hakwonfarm



INSTAGRAM



Ban Ji-eum runs through a field of buckwheat at Borinara Hagwon Farm.



Stone wall path of Namsa Yedamchon Village.



Namsa Yedamchon Village

The two sub characters, Yoon Cho-won (played by Ha Yoon-kyung) and Ha Do-yoon (played by Ahn Dong-goo), hide their feelings for one another from each other. However, walking along the stone wall path of Namsa Yedamchon Village, they begin to speak a little more honestly with each other. Cho-won even gives a flower ring to Do-yoon, making viewers' hearts skip a beat.

This scene was filmed at Namsa Yedamchon Village in Sancheong, Gyeongsangnam-do. The village has earned

recognition as “Korea’s most beautiful village” and showcases the beautiful harmony created when hanok and nature coexist. In the drama, Cho-won and Do-yoon see the Pagoda Tree Couple, two large pagoda trees that appear like a couple embracing, as their trunks meet and cross. Myth has it that any couple who walks beneath these trees while holding hands will still be a couple in their next life.

ADDRESS: 10 Jirisan-daero 2897beon-gil, Sancheong-gun, Gyeongsangnam-do (경상남도 산청군 단성면 지리산대로2897번길 10)

OPERATING HOURS: Open 24 hrs

ADMISSION: Free

INQUIRIES: +82-70-8199-7107



Mujinjeon Pavilion

Ji-eum and Seo-ha visit a pond to bring back memories of their first life. In their first life, their eyes met through a fire show over this pond. In this episode, the drama’s secret is revealed, like the lifting of a veil.

This beautiful fire show is a traditional fire show from the Joseon period, and is called nakhwanori, or “falling fire play.” Bags made of hanji (mulberry paper) are filled with charcoal powder and hung from many vines made from tree bark over a river before being set ablaze. The fire usually would burn for an hour or two, making a beautiful fire show that one could be mesmerized by. This scene in

the drama was filmed at Mujinjeong Pavilion in Haman, Gyeongsangnam-do. The pavilion hosts the Nakhwanori Festival every year on Buddha’s Birthday (eighth day of the fourth month on the lunar calendar).

ADDRESS: 25 Goesan 4-gil, Haman-gun, Gyeongsangnam-do (경상남도 함안군 함안면 괴산4길 25)

OPERATING HOURS: Open 24 hrs

ADMISSION: Free

INQUIRIES: +82-55-580-2551



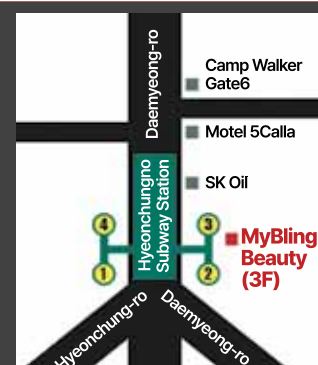
Nakhwanori scene from the drama.

COPYRIGHTS ©KOREA TOURISM ORGANIZATION. ALL RIGHTS RESERVED
www.visitkorea.or.kr



Treat yourself to beautiful nails
Make your day! **MyBling Beauty**

Located Near Camp Walker Gate6 / Military ID holders 20% DC
MANICURE, PEDICURE, ACRYLIC, GEL, EYELASHEXTENSION, WAXING



3F, 216, Daemyeong-ro, Nam-gu, Daegu

Tue~Sat. 11:00~21:00

070-8747-2414

010-6376-2414

Myblingbeauty

KOREA KIDS' CORNER

A sweet escape to strawberry farms!

BY HYEMIN LEE,
STRIPES KOREA

Starting in winter through early spring, Korea's sweet, plump strawberries are ripe for picking. This delightful berry is beloved in Korea and you'll notice many strawberry desserts, drinks and events are available this time of year.

Strawberry-picking at one of the many farms open to the public is a popular activity to enjoy during the season. In addition to spending time picking ripe berries, many of the farms also offer strawberry desserts and classes to make strawberry cakes, Tanghulu (candied fruit), fondue, and cookies.

Here are some kid-friendly strawberry farms near you that you might want to explore with your family!

lee.hyemin@stripes.com



Photos by Korea Tourism Organization

Yulbom Botanical Garden (울봄식물원)

This agriculturally themed botanical garden hosts a special strawberry event during this season. Visitors can pick strawberries and enjoy making strawberry jam and water jelly. There are also other exciting activities like sledding, roasting marshmallows and feeding animals. The garden promises a relaxing time for visitors amidst nature and vibrant fruits.

An admission fee is required for all visitors, whether participating in the strawberry picking activity or not. Admission includes entry to the garden and food to feed the resident animals.

Booking is available through Naver. Every Monday at noon, the garden opens reservations for available spots during the week. At 7 p.m. on Friday, there is another opening depending on the strawberry condition and amount available at the farm.



NAVER MAP



BOOKING

ADDRESS: 84 Domari, Toechon-myeon, Gwangju-si, Gyeonggi-do**DATE:** Dec. 2023 – Apr. 28, 2024**HOURS:** 10 a.m. – 4 p.m.**PHONE:** 031-798-3119**PRICE:** Admission 5,000 won / Picking strawberries for a 1-kg pack 25,000 won (Group rate available)

Photos by Strawberry Picnic

Strawberry Picnic (딸기랑 소풍가기 좋은 날)

This farm is about 15 kms (9.3 miles) away from Osan Air Base and is popular for its fresh strawberries and a kid-friendly environment. In addition to strawberry-picking, visitors can freely enjoy activities such as feeding rabbits and making flip books for free. With additional fees, visitors can also make strawberry chocolates and ice cream. Reservations can be made through Naver without creating an account, and you can pay on-site.

ADDRESS: 8 Jeonwon-ro, Namsa-eup, Cheoin-gu, Yongin-si, Gyeonggi-do**HOURS:** 11 a.m. – 2 p.m. (Thu-Fri) / 11 a.m. – 5 p.m. (Sat-Sun)**PHONE:** 010-4565-5024**PRICE:** Picking strawberries for a 500-gram pack 15,000 wonNAVER MAP
& BOOKING

Photos by Dreaming Kids Farm

Dreaming Kids Farm
(꿈꾸는 키즈팜)

Dreaming Kids Farm is about a 25-minute drive (18km/11 miles) from Camp Humphreys, but it's not just a farm. It is a kid-friendly cultural complex where children can enjoy various facilities and activities such as playgrounds, European vegetable picking, and food-making classes. The indoor playground features a big air bounce slide, sand zone, and kids' cars. It's a great blend of a strawberry farm and a kid's café where both children and parents can have a fantastic experience. The package program includes a 200-300-gram pack of strawberries and vegetables and strawberry jam or strawberry cake making. The strawberries used in the cooking activities are provided separately from the harvested ones. Also, visitors are treated to roasted sweet potatoes as a snack during the activity.

Booking can be made through Naver or inquiring via phone call.

ADDRESS: 27-26 Bangchuk-ri, Hyeondeok-myeon, Pyeongtaek-si, Gyeonggi-do**HOURS:** 11 a.m. (Fri) 10 a.m. & 2 p.m. (Sat-Sun)**PHONE:** 010-7756-9561**PRICE:** 60,000 won – 75,000 won for three people (an additional 10,000 won for each extra person, up to three people)NAVER MAP
& BOOKING

Photos by Queen Strawberry

Queen Strawberry (여왕딸기)

This rural education farm is well known in the Gyeongbuk region for its many farm activities. It is about 22 to 37 km (13.7~23 miles) away from U.S. military bases in Daegu and has excellent strawberries, photo zones and delicious treats. Try making strawberry fondue and strawberry pizza. Kids can enjoy a fun barrel train ride as well.

The farm is close to many famous attractions like Hwawon Amusement Park and Samunjin Quay, making it a wonderful destination for a day trip for families and couples.

Reservations can be made through Naver without creating an account or simply pay on-site. They offer a package program for 2-4 people that includes one pack of strawberries per person, making a strawberry pizza, one set of strawberry fondue, a train ride, and free fish cake soup.



NAVER MAP



BOOKING

ADDRESS: 1890, Nogok-ri, Go-ryeong-gun, Gyeongsangbuk-do**HOURS:** 10 a.m. – 5 p.m.**PHONE:** 010-4528-6390**PRICE:** 74,000 won for 2 people / 103,000 won for 3 people / 132,000 won for 4 people



Photo by Clean Strawberry Farm



Photos by Ddalgiga

Clean Strawberry Farm (청정딸기농원)

This strawberry farm is about a 20-minute drive (12km/7.5 miles) from Camp Humphreys and offers visitors the pleasing experience of picking fresh strawberries and making beautiful strawberry desserts. They offer a package program that can accommodate a total of up to six participants and includes a 500-gram pack of strawberries you pick, making strawberry fondue, and a strawberry cake. Reservations in Naver open every Tuesday at 7 p.m. for available spots that week. Keep in mind that as this farm is popular among locals, it can be quite competitive to get a spot.

ADDRESS: 696-2, Jungjeong-ri, Anseong-si, Gyeonggi-do
PHONE: 010-8729-1710

PRICE: 50,000 won (1-6 people) for a 500 g pack of strawberries+ making strawberry fondue and cake



NAVER MAP
& BOOKING

Ddalgiga (딸기가)

Taking 20-25 minutes (12km/7.4 miles) drive from the U.S. military base in Daegu, this farm is not only popular for its fresh strawberries but also for fun activities beloved by kids, such as baking strawberry rice cookies and making strawberry rice cakes. Many kindergartens bring their students to the farm for fun-filled field trips. Bookings can be made through Naver or inquiring by phone.

ADDRESS: 94-21, Palgong-ro, Dong-gu, Daegu

PHONE: 010-9690-3988

PRICE: 10,000 won -15,000 won for strawberry picking / 12,000 won for baking strawberry cookies



NAVER MAP
& BOOKING



Conference Room
Mustang Café
Business Center
Fitness Room



TURUMI LODGE

Cultivating a Legendary Experience
OSAN AIR BASE, KOREA

Do you have friends & family visiting soon? Or do you just need a time out?
 Make reservations at the most comfortable and affordable place in town. Room rate is \$63.00 per night for all rooms.
 Space Available reservations can be made for up to 120 day in advance. Turumi Lodge operation 24 hours, 7days a week.

DSN: 315-784-1844 Comm: 82-31-661-1844 E-mail: turumilodge.reservat@us.af.mil

www.dodlodging.net www.51fss.com




IT'S TIME TO EXPLORE EXCLUSIVE BENEFITS.

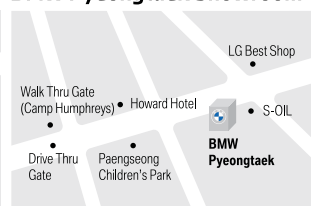
BMW MILITARY SALES



BMW Yongsan Showroom



BMW Pyeongtaek Showroom



 Please contact BMW Yongsan or Pyeongtaek Showroom for more special offers.

TEL. 1577-2696
Website www.bmwddskorea.com
Facebook www.facebook.com/BMWDirectandSpecialSales

BMW
GROUP
Korea



www.yonseiuro.com

Daegu Yonsei S Urology

American doctor qualification authentication (ECFMG 0-666-991) in compliance with the urologic medical specialist

MEDICAL TREATMENTS

- STD Diseases
- Prostate Disorders
- Circumcision
- Vasectomy
- ED

**Reservation and Consultation
(053) 253-5825**

GSA in Korea

GSA Global Supply® is now storing and delivering approximately 750 high-demand National Stock Number (NSN) items formerly stored in and shipped from the continental United States. The change reduces delivery time to a few days from weeks or months.

Customers can order using GSA websites (GSA Global Supply or GSA Advantage!®) or via existing customer logistics platforms (e.g., GCSS-Army). GSA's systems recognize the items stocked in Korea and fulfill orders locally. Other items will ship from the mainland. An electronic catalog is available.



Ron Easley

The program does not replace existing retail stores managed by GSA in Korea. For more information, please contact your local Customer Service Director Ron Easley at ronald.easley@gsa.gov.

Check Out GSA's Korea Catalog!



Scan this QR code to view
GSA's Korea catalog.

GSA Global Supply®
Your Reliable Government Source

Stripes Korea is A Stars and Stripes Community Publication. This newspaper is authorized for publication by the Department of Defense for members of the military services overseas. However, the contents of Stripes Korea are unofficial, and are not to be considered as the official views of, or endorsed by, the U.S. government, including the Department of Defense or the U.S. Pacific Command. As a DOD newspaper, Stripes Korea may be distributed through official channels and use appropriated funds for distribution to remote and isolated locations where overseas DOD personnel are located. The appearance of advertising in this publication, including inserts or supplements, does not constitute endorsement of those products by the Department of Defense or Stars and Stripes. Products or services advertised in this publication shall be made available for purchase, use, or patronage without regard to race, color, religion, sex, national origin, age, marital status, physical handicap, political affiliation, or any other nonmerit factor of the purchaser, user, or patron.

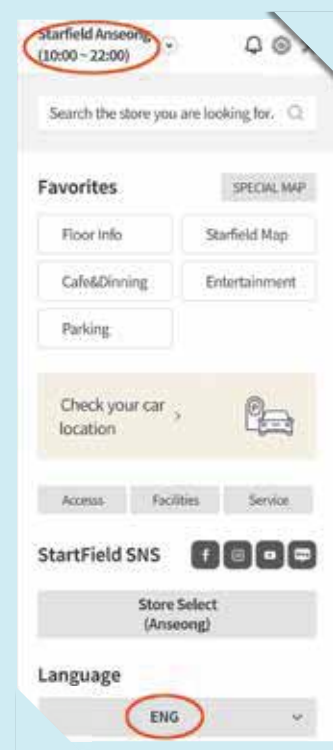
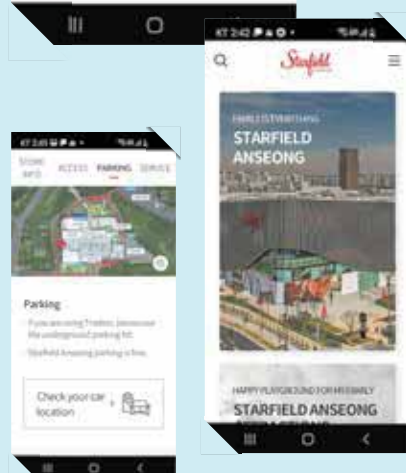


Shopping made convenient with the Starfield app

STRIPES KOREA

With the most modern facility and many options, probably Starfield in Korea is definitely a shopper's heaven. If you love to shop at the giant complex mall, you might want to download their convenient shopping app. The app works for all Starfield locations including Pyeongtaek, Hanam, Goyang, and Bucheon. Avoid the crowds and check out the great features available right on your phone.

The app will give you real-time data on parking availability. Forgot where you parked? The app also helps you track your vehicle location! The app also provides detailed information about the over 300 shops and 70 restaurants inside Starfield. Thinking about making a trip to the mall for shopping this weekend? Check your cell phone's app store for this convenient tool to relieve some of the stress of heading to the shopping mall!



The app offers an English option only for the Starfield Anseong branch. Choose "Starfield Anseong" in the list and select "ENG" at the bottom.



girlscouts
usa girl scouts
overseas

Your Year of Friendship

- ✓ Make new friends
- ✓ Go on amazing adventures
- ✓ Try new things
- ✓ Grow your leadership

Girl Scouts on military bases across Korea do all this and more. It's the perfect time to join the fun!



Use the code **BRINGAFRIEND5** for \$5 off any Girl Scout membership!



Join us for camp over Spring Break!

Mar. 24 - 29, 2024

Camp Taiwan

Learn more at:

bit.ly/USAGSOcamp

Stripes Sports Trivia

The price of an MLB team, these days, is pretty astronomical. In 2012, the Dodgers were purchased for \$2 billion. More recently, the lowly Marlins fetched \$1.3B. The cheapest purchase of a current franchise was, go figure, one that has stayed in the family for nearly 50 years. Which franchise cost only \$8.7 million in 1973?

Answer
New York Yankees

100 Hours Fundamental Course

Permanent Make-up Education & Training Course P.M.U Curriculum

Infection Control, Bloodborne Pathogen, Pigments/Inks consist, Technical Application, Anatomy & Physiology, Diseases & Disorders, Regulations, Legal, Client Management, Documentation.

Permanent Make-up Services

Eyebrow, Eyeliner, Lip Blush, Tint Lip, Scalp Micropigmentation, Paramedical, Tattoo, Eyelash Lift, Eyelash Extension, Skin Care.

Military to civilian life After The Military

New Life Challenges and Successful Life After Discharge Challenge yourself to a business that makes people beautiful.

Website spcp.org
koreaspcp.kr

F4, 193, Gumi-ro, Bundang-gu, Seongnam-si, Gyeonggi-do, Republic of Korea - zip code 13621
Phone. +82-10-7139-3929 Mobile. +82-10-3897-0717

Beautiful Places To Travel in Yeongwol

심쿵 예약

달달영월 YouTube 달달영월 Instagram [daldal_yeongwol](https://www.instagram.com/daldal_yeongwol)

TRANSITION ASSISTANCE PROGRAM

Getting out of the Military?

You should start the Transition Assistance Program

18 Months before ETS

24 Months before Retirement

*Must start 12 months before ETS

To Get Started

Go to: <https://portal.armytap.army.mil>

Or visit us in person

USAG Humphreys

Maude Hall, W-301

DSN: 757-2101

Comm: 05-033-57-2101

Or visit your local TAP Center

DID YOU KNOW?

A low birthrate is a very serious issue in South Korea as the country's total fertility rate recorded at 0.78 in 2022, the lowest rate in the world. Experts argue changes in lifestyle, the spread of individualistic values, and the expensive cost to raise a child are factors discouraging young South Koreans from getting married and having children.

Hangul of the week

아이

Ai (Child)

Language Lesson

The child is really cute.

Ai-ga neomu gwiyeowoyo
(아이가 너무 귀여워요)

Crossword

by Margie E. Burke

ACROSS

1 Heron or flamingo

6 Vaulted recess

10 "Arf!" equivalent

14 Positive pole

15 Palindromic time

16 Skin soother

17 Pub offering

18 Treat, as meat

20 For each person

22 Pumps and clogs

23 Have a bug

24 Evaluate

26 Glasgow's home

31 Pressured, with "on"

35 Crafted on a loom

36 Bird in a holiday song

38 Ginger

39 Pitching style

40 Fly catcher

41 Albania's northern neighbor

43 Force

44 As originally placed

45 Ones who have class

47 Shoe style

49 Nothing

50 Like new dollar bills

53 Without consideration

59 Tipping point

61 Dance around, as an issue

62 Lascivious look

63 Qatar's continent

64 Twilled fabric

65 Jury member

66 Lean (on)

67 Took a shot at

3 Way out

4 What teachers do

5 Consumers' price

6 Nay sayer

7 Yeats or Keats

8 Whale finder

9 Call off

10 ICBM part

11 Varied mixture

12 Move like molasses

13 Bank charges

19 Respect

21 Record sales status

25 Versatile

26 Mystic

27 List introducer

28 Hot spots

29 Artist's subject

30 Bottom of the barrel

32 Bad kind of situation

33 Calendar entry

34 Unpaid bills

37 Like some apples

39 Frame jobs

42 Bettor's adviser

43 Keep one's promises

46 Dump, as stocks

48 Prize money

50 Hoofbeat sound

51 See red

52 Vacation destination

54 Picture holder

55 Traveling

56 Madras dress

57 Periphery

58 Monopoly card

60 La Brea goo

Copyright 2024 by The Puzzle Syndicate

Answers to Previous Crossword:

S	P	A	T	E	D	R	U	B	R	A	F	T
A	L	I	E	N	A	O	N	E	A	C	L	U
L	U	M	P	S	T	E	C	H	N	I	C	A
E	S	S	E	N	C	E	L	E	A	D	E	R
A	R	M	R	E	I	N	S	T	A	T	E	
L	O	O	S	E	E	N	D	L	U	R	C	H
F	U	N	T	P	E	E	P	S	B	A	R	E
A	T	T	I	C	P	R	E	D	A	T	O	R
P	R	O	B	A	T	I	V	E	E	W	E	
A	C	E	L	O	C	H	N	E	S	S		
P	U	L	L	O	U	T	G	R	I	N	N	E
T	R	I	E	N	N	I	A	L	G	O	O	D
L	I	E	N	C	O	D	E	N	J	D	G	E
Y	A	R	D	E	N	D	S	S	T	E	E	D

SUDOKU

Difficulty: Medium

7				5				
3	9		6			4		
			4				9	5
	5				2	6		7
			7			8		1
			5			9		
		3		9		1		
				2			8	
4		7						

Edited by Margie E. Burke

HOW TO SOLVE:

Each row must contain the numbers 1 to 9; each column must contain the numbers 1 to 9; and each set of 3 by 3 boxes must contain the numbers 1 to 9.

Answer to Previous Sudoku:

5	1	6	7	2	9	4	3	8
4	8	9	3	1	5	7	6	2
7	3	2	4	8	6	1	9	5
1	4	7	2	5	3	9	8	6
6	2	8	9	4	7	3	5	1
9	5	3	8	6	1	2	7	4
3	6	5	1	7	4	8	2	9
8	9	4	6	3	2	5	1	7
2	7	1	5	9	8	6	4	3

Car friend

자동차 친구

Experience special detailing offers as our gratitude for your car purchase!

QUALITY PREOWNED SELECTION

<p>BMW 4 Series 420d Coupe Luxury (Diesel) 2014 model/97,631 miles</p> <p>\$9,990</p>	<p>Mercedes-Benz C Class 220d Avantgarde (Diesel) 2019 model/37,348 miles</p> <p>\$21,990</p>	<p>BMW 3 Series 320d Xdrive (Diesel) 2015 model/96,032 miles</p> <p>\$8,999</p>	<p>Ford Taurus 3.5 Limited (Gasoline) 2011 model/99,148 miles</p> <p>\$2,699</p>	<p>BMW 750Li (Gasoline) 2008 model/92,368 miles</p> <p>\$4,599</p>	<p>Hyundai Avante HD S16 Luxury (Gasoline) 2009 model/55,457 miles</p> <p>\$2,599</p>
---	---	---	--	--	---





CERTIFIED MEASURED COURSE
WORLD ATHLETICS
In cooperation with AIMS

SAIPAN MARATHON

SAT / MARCH 9 2024

AMERICAN MEMORIAL PARK, MICRO BEACH, GARAPAN, SAIPAN, THE MARIANAS

Full Marathon (26.2 miles/42.195 kilometers) **Half Marathon** (13.1 miles/21 kilometers) **10K** (6.2 miles) **5K** (3.1 miles)



The Marianas
| Saipan | Tinian | Rota |

<p>Schedule</p> <p>4:30 a.m. ChST (Full) 5:30 a.m. ChST (Half) 6:00 a.m. ChST (10KM) 6:15 a.m. ChST (5KM) 5:00 p.m. (Banquet)</p>	<p>CNMI/USA/International (Feb. 1 - Feb. 28 Rate)</p> <p>Full Marathon \$100.00 (Must be 18 years & older) Half Marathon \$70.00 (Must be 14 years & older) 10KM and 5KM \$70.00 (All Ages)</p> <p>High School/Junior High (Feb. 1 - Feb. 28 Rate)</p> <p>Half Marathon / 5KM / 10KM \$50.00 (Must be 18 years or under)</p> <p>*Register NOW Rate changes on Feb. 29, 2024</p>	
--	--	---