

CANAAN Realty
 Since 2003
 031-691-0079
 Facebook.com/RealtyCANAAN
 www.CANAANRealty.net

Overlooked traffic laws you need to know

>> Page 7

STARS AND STRIPES.
CAST YOUR VOTE!
 VOTE FOR YOUR FAVORITES!

STARS AND STRIPES.
BEST OF THE PACIFIC
 2024

YOU COULD WIN
 A GIFT CARD WORTH UP TO
\$300!



Vote online by
MARCH 17

BESTOFPACIFIC.STRIPE.COM

INSIDE INFO

KOREA KIDS' CORNER

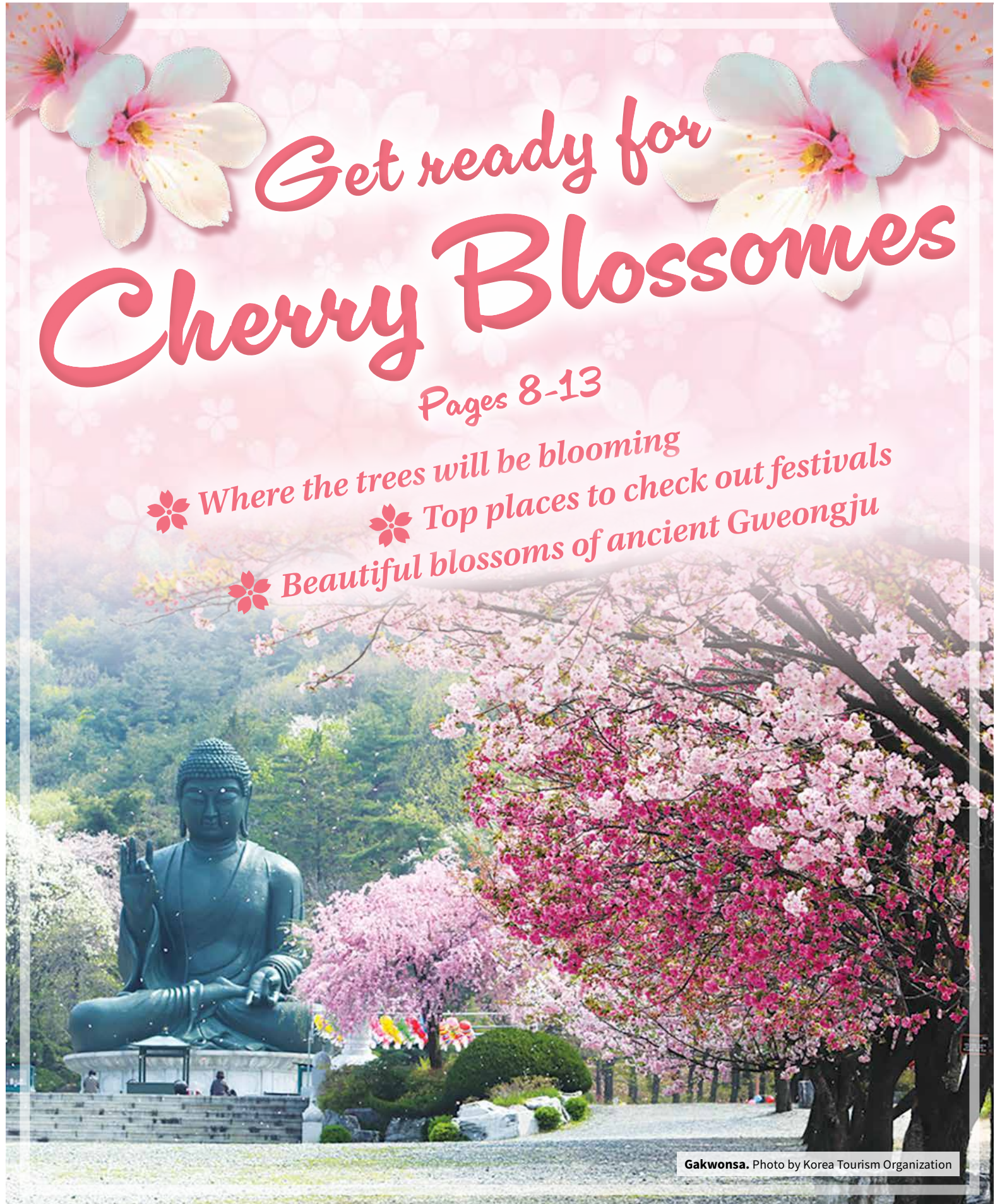


FREE BIKE RENTALS FOR SCENIC ADVENTURE NEAR CAMP HUMPHREYS

PAGE 6

H&R BLOCK®

HUMPHREYS Tel: 070-7727-6100
 OSAN AB (K-55) Tel: 070-7597-0132
 CAMP WALKER Tel: 070-7725-9887
 ITAEWON OFFICE Tel: 02-795-7555
 www.hrblock.kr



*Get ready for
 Cherry Blossomes*

Pages 8-13

Where the trees will be blooming
 Top places to check out festivals
 Beautiful blossoms of ancient Gyeongju

Gakwonsa. Photo by Korea Tourism Organization

MON-SUN (07:00-20:00)
 Breakfast, Lunch & Dinner
 +82-10-8288-0865

SAVORY RESTAURANT

1 minute from Yoon Gate, Camp Humphreys





NAVER WAZE KAKAO

STARS AND STRIPES

www.stripes.com

Max D. Lederer Jr.
Publisher

Laura Law
Chief Operating Officer

Lt. Col. Marci Hoffman
Commander

Michael Ryan
Chief of Staff

Scott Foley
Revenue Director

Chris Verigan
Engagement Director

Marie Woods
Publishing and Media Design Director

Chris Carlson
Publishing and Media Design Manager

Eric Lee
Revenue Manager

Enrique "Rick" W. Villanueva Jr.
Korea Area Manager

Jinsun Song
Operations Manager

Kentaro Shimura
Production Manager

Rie Miyoshi
Engagement Manager

Denisse Rauda
Publishing and Media Design Editor

Publishing and Media Design Writers

Shoji Kudaka

Hyemin Lee

Luis Samayoa

Takahiro Takiguchi

Layout Designers

Kazumi Hasegawa

Mamoru Inoue

Yuko Okazaki

Kayoko Shimoda

Multimedia Consultants

Max Genao

Doug Johnson

Hans Simpson

Chae Pang Yi

Benjamin Yoo

Gianni Youn

Robert Zuckerman

Graphic Designers

Yukiyo Oda

Kenichi Ogasawara

Yosuke Tsuji

Sales Support

Ji Young Chae

Tomoyo Hoshino

Dong Ju Lee

Yoko Noro

Yusuke Sato

Kanna Suzuki

Saori Tamanaha

Toshie Yoshimizu

For feedback and inquiries,
contact Customerhelp@Stripes.com

To place an ad, call DSN 755-2255
korea.stripes.com/contact

Stupid human tricks major pet peeve

The Meat and Potatoes of Life

Lisa Smith Molinari



Our family's third Labrador retriever, a goofy guy named Gilligan, turned 1 year old last week. Suddenly, everyone's a dog expert, hell-bent on enriching me with their wealth of canine knowledge. People must see me struggling with rambunctious Gilly, and want to assert dominance, nipping, bossing and taking control.

Thankfully, no one has humped my leg yet.

Just last week, Gilly and I joined a new walking group outside the local recreation center. The congregating women noticed Gilly sniffing the bushes and raised their voices to an excited pitch. Gilly strained at his harness, wanting to flop his big paws onto the women's expensive coats, deposit yellow hairs all over their Lululemon pants and lick them right in the mouth.

"Gilly! Back!" I repeatedly tried to make him sit.

"Isn't he sweet!" they squealed, while Gilly wriggled to break free.

"He's turning 1, and he's a handful," I said, apologetically.

"Oh, but he's a puppy! You just need to be consistent," they advised.

I smiled and nodded my head with brows raised as if to say, "You're so wise," when my inner voice retorted, "Thanks for the expert advice, Captain Obvious."

"He'll go to Island Canine Academy for behavior training in a couple months," I explained. "Gilly's off to college!" I joked. "We've promised him a tiny lava lamp and a 'Lassie' poster for his crate at the Academy, isn't that right, buddy?"

No one laughed.

A short lady with a red hat that made her look like a gnome told me about her Westie named Charlie. "I trained him using treats. You should try that," Gnome said. My inner voice dripped sarcasm, "Eureka, Einstein! Treats to train dogs? Who knew! Thank you from the bottom of my ignoramus heart!"

Our walking group leader arrived, and we began the planned four-mile trek. The gaggle of women naturally settled into packs of two or three, while Gilly tugged, stopped, sniffed and yanked along with me.

I was between two packs when I heard, "Hey!" A thin woman wearing a hat with a humongous mauve pom-pom trotted to catch up with me, blurting breathlessly, "Get a gentle leader. It's the only thing that works for pulling dogs." I've been told by countless people that this or that collar/leash/harness is the only one that works. Prong, electric,

slip, martingale, harness — everyone and their brother's cousin's mother-in-law seemed to have an opinion for me. I tried to tell Pom-pom about my experiences with gentle leaders, but she just kept yammering.

POM-POM: "The gentle leader goes around the dog's—"

ME: "Yes, I know how it—"

POM-POM: "—snout, and it keeps them from—"

ME: "—works, because I used gentle leaders for our first—"

POM-POM: "—pulling. You need to get one, seriously."

ME: "—dog to stop his pulling."

Mercifully, Gilly dragged me toward a fat squirrel ahead, leaving Pom-pom behind. Another woman in an ice-blue beanie saw Gilly tugging me and chirped, "My sister has Golden retrievers, and she swears, 'If you can teach dogs to retrieve balls, you can teach them anything.'" My inner voice couldn't stay silent any longer.

"Your sister says that teaching a RETRIEVER to RETRIEVE is the key to dog training? She's a real genius, that one," I sassed Beanie.

Gilly stopped to sniff grass, and I heard Gnome call out, "Do you brush Gilligan's teeth?"

"Well, yes, but he's afraid of the —" I began, but like Pom-pom, Gnome's questions were merely rhetorical.

GNOME: "We brush Charlie's teeth every night, before he—"

ME: "—brush, but he likes the Peanut Butter dog toothpaste, so I—"

GNOME: "—goes to bed and says his prayers, and—"

ME: "—have to use a cloth next time."

GNOME: "—the vet says Charlie's teeth are perfect."

My inner voice quipped, "Who died and made you Cesar Millan?"

As we approached the rec center at the end of our trek, Gilly stopped abruptly, circled three times, then crouched to make "a deposit" on the grass in front of the bank. The women walked on, without noticing that I'd fallen behind the pack.

"Forget behavior school; I'll train you myself," I announced to Gilly while he concentrated. "Don't worry," I assured him, "we'll still get you that lava lamp."

Read more of Lisa Smith Molinari's columns at: themeatandpotatoesoflife.com and in Lisa's book, *The Meat and Potatoes of Life*:
My True Lit Com
Email: meatandpotatoesoflife@gmail.com

We Stand Ready to Serve Every Soldier

We're here to help the military community and their families make the most of their money. **Our members could earn and save \$349* per year by banking with us.**

Visit navyfederal.org to join.

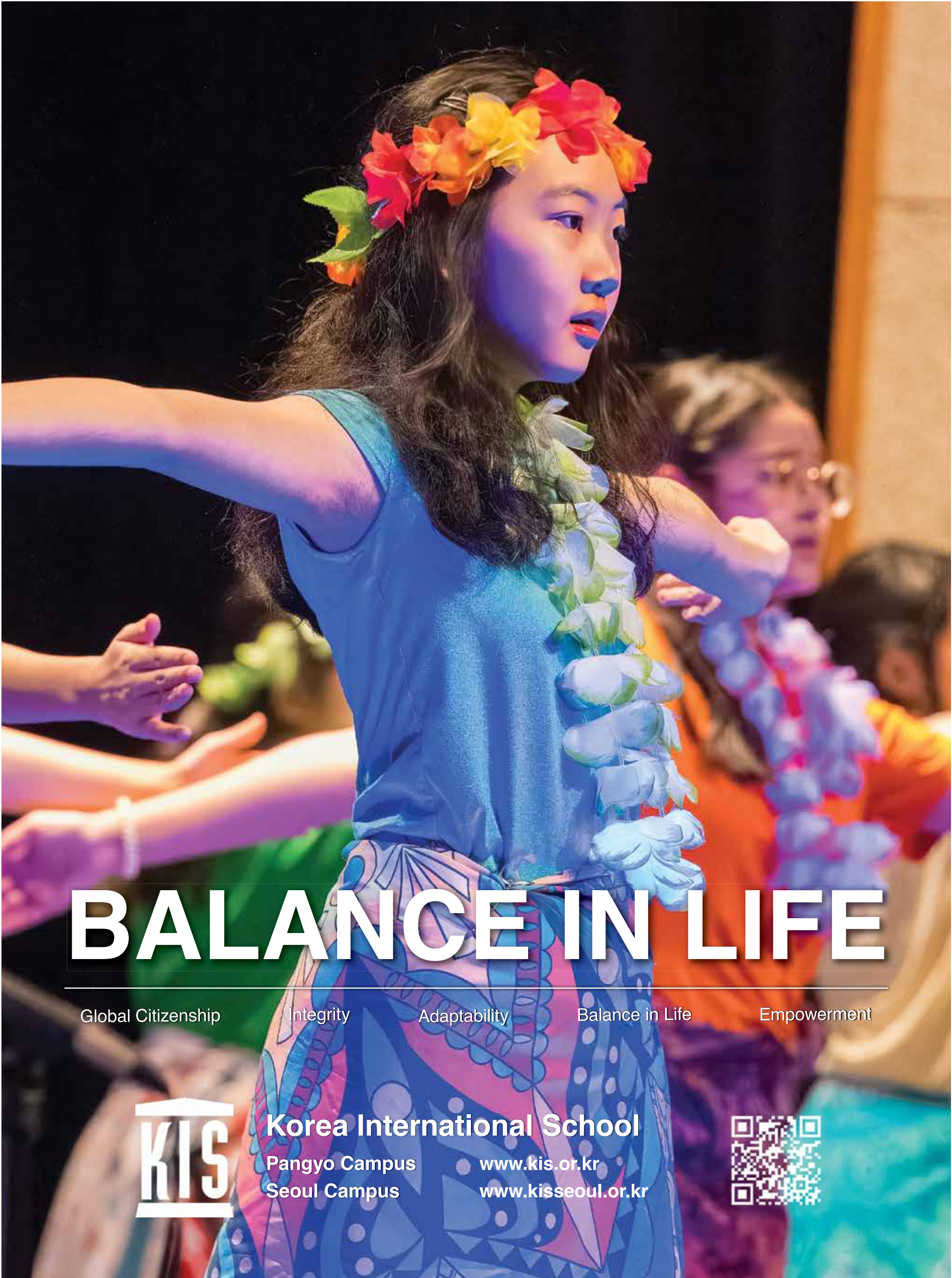
Insured by NCUA.

*Dollar value shown represents the results of the 2021 Navy Federal Member Giveback Study. The Member Giveback Study takes into consideration internal market analyses comparing Navy Federal products with industry national averages, as well as discounts, incentives, and other savings. Image used for representational purposes only; does not imply government endorsement. © 2023 Navy Federal NFCU 14172-A (1-23)

NAVY FEDERAL Credit Union

ARMY
MARINE CORPS
NAVY
AIR FORCE
SPACE FORCE
COAST GUARD
VETERANS

Our Members Are the Mission



BALANCE IN LIFE

Global Citizenship Integrity Adaptability Balance in Life Empowerment



Korea International School

Pangyo Campus
Seoul Campus

www.kis.or.kr
www.kisseoul.or.kr





STORY AND PHOTOS BY CHIHON KIM,
STRIPES KOREA

There are a few choice dishes that one might think of when dreaming of Korean food. Bulgogi, Korean barbecue beef, is one of those.

Literally translated to “fire meat,” bulgogi is just that...

fire because it’s so delicious! As you travel throughout the Peninsula and abroad, you’ll notice there are a few variations on the way it is prepared. For the most part, however, ingredients like soy sauce, minced garlic, sugar, and

sesame oil are standard for bulgogi.

If you’re wanting to bring the taste of Korea to your kitchen, give this one a try. I dug deep into my memory to when I served in the Korean Navy and had to pull kitchen duty aboard ship for this bulgogi recipe.

- **PREP TIME:** 10 mins
- **COOK TIME:** 5 mins
- **MARINATING TIME:** At the least 3 hours or overnight
- **TOTAL TIME:** 15 -20 mins
- **DIFFICULTY:** Easy
- **SERVINGS:** 4

INGREDIENTS

- 1 lb thinly-sliced beef (500g)
- Some thinly sliced mushrooms (shiitake, enoki, or button mushrooms) about 40g (optional)
- 1 cup thinly sliced onion (150g)
- 1 cup sliced scallions (80g)
- Sesame seeds (optional)

MARINADE

- 1 Tbsp minced garlic
- 2 Tbsp minced onion (optional)
- 2 pieces minced pineapple or kiwi, Asian pear, red apple (optional)
- 2 Tbsp brown sugar (or 8 Tbsp pineapple juice)
- 3 Tbsp sesame oil
- 5 Tbsp dark soy sauce
- Black pepper

INSTRUCTIONS

Choose the cut of meat: Tender parts of beef such as sirloin, blade, tenderloin are commonly used for this dish. While ribeye is used often, if you’re comfortable with tenderizing meat cuts, then choose whichever you prefer. For my recipe, I chose a chuck roll, which is a little tough but less expensive than other cuts, but it still worked well for my bulgogi.

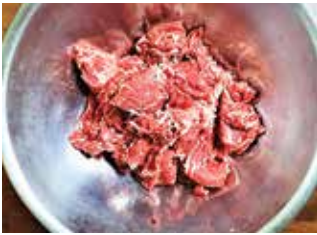
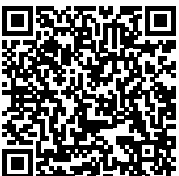
My way to make meat more tender: I usually use pre-cut bulgogi from the freezer section of a Korean grocery store. If you have a large portion of meat in your fridge or prefer to cut meat yourself, freeze the meat for about 2 hours, then slice it.

Not every cut of meat is melt-in-your-mouth tender, so I usually use pineapple to tenderize it. This is a good tip that I learned from the battleship kitchen. Minced Korean pear, red apple, or kiwi also work well.

1 Cut the meat into 2-3mm-thick and place them in a deep pan or food container. If you get tough meat such as chuck roll, then cut it into 1-1.5mm-thick slices.

2 Gather all the marinade ingredients into a bowl. Instead of brown sugar, I mixed in the juice from canned pineapple as well as a few pieces of minced pineapple and a minced half onion.

View video
to make this
hot dish!



3 Marinate the meat for at least 3 hours. I sometimes marinate the meat overnight in the fridge like I learned in the Navy.

4 Remove the bowl of marinated bulgogi from the fridge and set it aside.

5 Slice the veggies thinly, then gently mix them in with the meat.

6 Over high heat, add the mixture into a pan and cook until the meat begins to sear. Be careful not to overcook the meat, so this process should take about 1 to 1.5 minutes per side.

7 Put black peppers and sprinkle sesame seeds on it. Serve it with a bowl of rice. Bon appetite or 잘 먹겠습니다! (Pronounced: jal meok-ke-sseum-nida)!



Try ssam-tastic spicy Korean pork BBQ!

STORY AND PHOTOS BY CHIHON KIM,
STRIPES KOREA

Gochujang, or red pepper paste, is a staple in the kitchen of Koreans. It is not an exaggeration to say that it's hard to find a Korean dish without gochujang, from tteokbokki to dakbokkeumtang (raised spicy chicken).

It's no surprise then that this spicy condiment has found its way into other dishes like Jeyukbokkeum, a spicy barbecued pork invented in the 1980s and found on most Korean restaurant menus today.

To make jeyukbokkeum, pork is usually marinated in a sauce made mainly with red pepper paste and some soy sauce and then cooked with vegetables. This recipe, however, cuts out the long marination process. In addition, I've reduced the amount of soy sauce and red pepper paste to some degree for those who are on a low salt diet like me or for those who avoid spicy foods.

This sweet and salty dish should be served up with rice and greens at the table, so don't forget to cook some rice in advance and get some fresh leafy greens such as lettuce to make a ssam when you go grocery shopping.

- Prep time: 10 mins
- Cook time: 10 mins
- Total time: 15 mins
- Difficulty: Easy
- Servings: 2

Ingredients

- 400g pork (blade shoulder or pork belly) cut into bite-sized pieces
- 1/2 onion thinly sliced
- 1 green onion cut into batons or 1-cm thick diagonal slices
- 3 chilies thinly sliced diagonally into 0.5-cm thick pieces
- 1 pinch of roasted sesame seeds

Sauce

- 1 tbsp thick soy sauce
- 1 tbsp minced garlic
- 1/2 tbsp red pepper paste
- 1 tbsp sugar or honey or corn syrup
- 1 tbsp chili powder
- 1 tbsp rice wine (optional)
- Black pepper
- 2 tbsp water
- 1/2 tbsp sesame oil

What is SSAM?

Ssam" literally means "wrapping in something," and Koreans love to wrap any kind of meat in leafy vegetables. Here's a quick manual to make a ssam. Place one or two pieces of lettuce in your palm. Put a piece of meat, a bit of ssamjang (Korean soybean paste), a piece of thinly sliced garlic (optional), and chili (optional), in the lettuce. You can also add some onion, other fillings or sauces, such as sesame oil. When you are ready to eat, open your mouth wide and go all-in-one to let the different flavors play magic in your mouth at the same time.



Watch Video!

Instructions

- Choose cut of meat: While blade shoulder and arms shoulder are used often, for my recipe, I chose a pork belly (or samgyopsal). This cut is a little thicker and greasier than other cuts, but it has a great chewy texture.

- 1) Cut all veggies into bite-sized pieces and set them aside.
- 2) Cut the meat into 3 to 7 mm-thick slices and place them in a pan. I usually use pre-cut pork belly from the freezer section of a Korean grocery store.
- 3) Over medium heat, cook the meats until browned. Then turn off the stove and drain pork oil from the pan.
- 4) Over medium heat, add 2 tbsp water, veggies, and sauce (soy sauce, red pepper paste, chili powder, minced garlic, rice wine) into a pan.
- 5) Cook until the veggies are tender. Add the honey, black pepper, and sesame oil right after turn off the stove. Sauté them with residual heat for about 20-30 seconds more.
- 6) Sprinkle sesame seeds on it. Serve it with a bowl of rice and greens. Bon appetite or 잘 먹겠습니다! (Pronounced: jal meok-ke-sseum-nida)!

잘 먹겠습니다!

KOREA KIDS' CORNER

Free bike rentals for scenic adventure near Humphreys

STORY AND PHOTOS BY HYEMIN LEE,
STRIPES KOREA

When the weather warms up, renting a bike at Pyeongtaek public bike rental shops (두바퀴의 행복 공공자전거 무료대여소) is a beloved activity among locals and both shops are conveniently located near Camp Humphreys. The shops offer a variety of bikes including tandem bikes, bikes in different sizes, with baskets, or backseats so everyone in your group can enjoy a nice ride.

Renting a bike is an easy process, and only requires filling out a simple form and verifying your phone number. Both shops are near scenic bike paths, and you can also request a brochure for bike route information from the rental shop to plan your adventure. Helmets are also available for free.

lee.hyemin@stripes.com



Public Bicycle Rental at Tongbokcheon Stream

Take a leisurely bike ride along Tongbokcheon Stream, where you can admire the season's flowers and trees lining the path. Springtime visits are highly recommended, as the stream path is filled with cherry blossoms and other spring flowers. There's no time limit for bike rentals as long as you return the bike by the time set with the shop.



The nearest parking lot is Tongbok Market public parking lot or you a 20-minute walk from Pyeongtaek Station.

ADDRESS: 174, Dongsak-ro, Pyeongtaek-si
HOURS: 10 a.m. - 5 p.m. (Closed Mondays)
CONTACT: 010-6782-4788



NAVER MAP



NAVER MAP

Tongbok Market public parking lot

ADDRESS: 23 Tongbok Market-ro, Pyeongtaek-si
FEES: Free for the first 90 minutes and 500 won every additional 30-minute block.

Public Bicycle Rental at Oseong Riverside

This location is ideal for those seeking an uncrowded bike path surrounded by picturesque landscapes. Start your bike trip from the Oseong-gang Riverside, where you can enjoy stunning river views as you follow the Anseongcheon Stream.

Another delightful option is to unwind at any of the many charming cafes nearby. Treat yourself to some pastries and coffee while soaking in the amazing sights.

On the weekends, bike rentals may be limited to two-hour slots so as many people can enjoy the activity. Free parking is available near the rental shop.

ADDRESS: 501-96 Danggeori, Oseong-myeon, Pyeongtaek-si

HOURS: 10 a.m. - 5 p.m. (Closed Mondays)

CONTACT: 010-3980-4788



NAVER MAP

Great cafes to visit nearby Oseong-gang Riverside



NAVER MAP

Café Gravity



NAVER MAP

Twosome Place River Tower



NAVER MAP



TIME TO EXPLORE SEOUL!



6 Days / 5 Nights

Room Package

Stay at Dragon Hill Lodge to be right in the center of Seoul's attractions, and also enjoy onsite access to services and facilities serving our U.S military and DoD communities.



USAG YONGSAN



DSN: #315-738-2222
or #02-790-0016 ext.1



reservations@dragonhilllodge.com



www.dragonhilllodge.com

Korea Tip of the Day

Overlooked traffic laws you need to know

BY HYEMIN LEE,
STRIPES KOREA

Navigating traffic laws is crucial when driving in Korea. As traffic laws are updated every year, some can be confusing. The following laws below are important to note, as they are frequently enforced by the police. Moreover, there are numerous enforcement cameras installed

throughout Korea, so there are more chances of receiving a traffic violation.

Below are frequently overlooked traffic laws to remember before you get behind the wheel.

Stop when turning right at intersections

Due to an increase in traffic accidents caused by right-turning vehicles, a traffic law for a mandatory stop at intersections has been enforced since 2022. Penalty for a violation is a fine of up to 100,000 won and 15 penalty points.

- **Red light:** Regardless of pedestrians, drivers must make a full stop at the stop line. Then, after ensuring the way is clear of oncoming traffic and pedestrians, a right turn can be made.
- **Green light:** When there are no pedestrians, drivers can make the right turn very slowly. Drivers must yield to pedestrians on the crosswalk.

- **Intersections with a right-turn signal:** When a right turn signal is installed at intersections, drivers must follow the signals. This means drivers can only make a right turn when the green arrow appears on the signal and cannot proceed if the light is red.

School Zone

School zones are designated sections within a 300-meter distance around kindergartens, elementary schools and hagwon private educational institutions. These zones are very common and traffic violations within them come with stricter punishments.

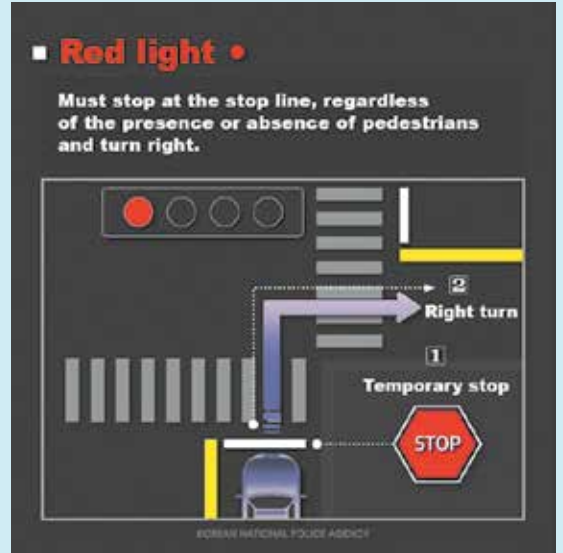
The speed limit in school zones is 20 or 30 km/h, with some areas allowing an increase to 40-50 km/h only during the night. Even when there are no pedestrians around, drivers must comply with the speed limit and make full stops at all crosswalks within the school zones. Be extra careful as these zones tend to have enforcement cameras monitoring traffic at all times. Parking in school zones is also prohibited.

Besides practicing extra caution in school zones, apps like Naver and Kakao Map can provide driving assistance and speed limit warnings to help you navigate the areas safely.

lee.hyemin@stripes.com



Photos by Korean National Police Agency

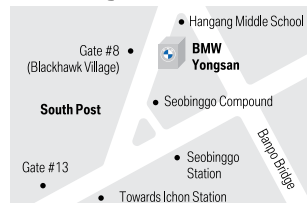


IT'S TIME TO EXPLORE EXCLUSIVE BENEFITS.

BMW MILITARY SALES



BMW Yongsan Showroom



BMW Pyeongtaek Showroom



Please contact BMW Yongsan or Pyeongtaek Showroom for more special offers.

TEL. 1577-2696
Website www.bmwdsskorea.com
Facebook www.facebook.com/BMWDirectandSpecialSales

BMW
GROUP
Korea



PYEONGTAEK REGION

This artificial lake in western Pyeongtaek created by building a seawall for Asan-ho Lake, is another cherry blossom hot spot. Enjoy a walk under the blossoms along the decks that border the edge of the lake. If you're lucky, you might catch some traditional music performances at the Soriter Art Center, see some local art at the Asan-ho Art Gallery and enjoy Morae-top Park, which all located inside the complex. Bring your blanket and some snacks for a scenic picnic on the grass near the art gallery.

ADDRESS: 159, Pyeongtaekho-gil, Hyeondeok-myeon, Pyeongtaek-si



NAVER MAP

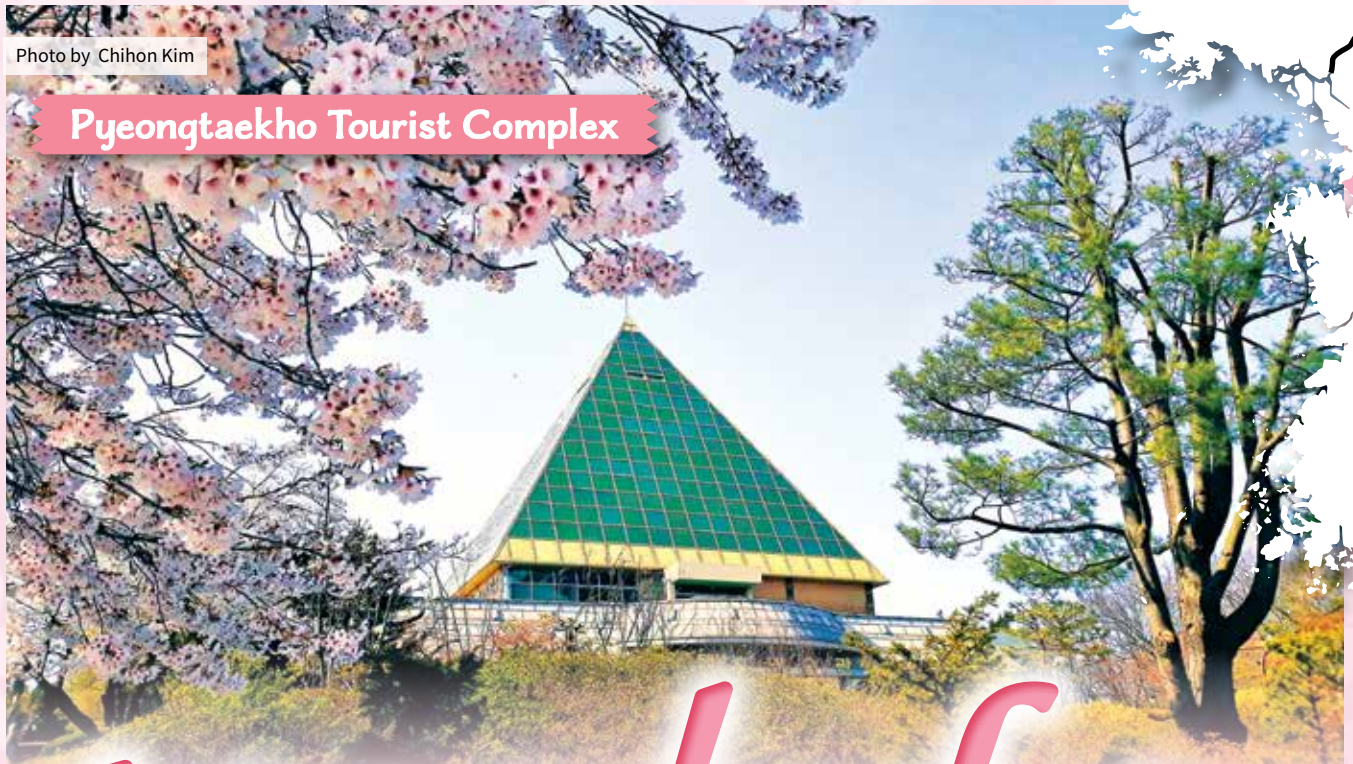


Photo by Chihon Kim

Pyeongtaekho Tourist Complex

Get ready for ch



Pyeongtaek University

Photo courtesy of Pyeongtaek City

This spot is about a 20-minute drive from Camp Humphreys. The campus itself is beautiful and the bell tower building which houses the school's library make for a great backdrop to the season's blush blooms. Pyeongtaek University is considered one of the most popular cherry blossoms viewing spots in Southern Gyeonggi-do. Every first weekend of April, the university holds a cherry blossom festival, featuring a variety of food trucks amidst the cherry blossoms and forsythia.

FESTIVAL: Saturday - Sunday, Apr. 6-7 (Can vary depending on the weather)
ADDRESS: 3825, Seodong-daero, Pyeongtaek-si



NAVER MAP



Kookje University (Eunhye-ro road)

Photo by Chihon Kim

Another go-to place to see the cherry blossoms in all their glory is at Kookje University near Osan Air Base. Every year in early April, the 1.2-km-long Eunhye-ro Road is lined with blush blossoms spanning from the entrance of the Ichung Cultural Center to Eunhye Middle and High School. Take a leisurely stroll under the cherry blossoms reminiscent of a wedding arch with a cup of coffee in hand and you'll soon learn nothing can't beat this view. I recommend you park your car in the Ichung Leports Park then walk towards Eunhye Middle School.

ADDRESS: 149, Janganut-gil, Pyeongtaek-si



NAVER MAP



Gakwonsa Temple

Photo courtesy of Chungnam Office

Enjoy the warm spring weather and king cherry trees with a trip to the beautiful temple. Gakwonsa Temple sits at the foot of Mt. Taejosan, which creates a relaxing, peaceful place to breathe in the fresh air, reflect and enjoy the picturesque scenery. What I like about this area is that there is more than just a beautiful temple and stone pagodas. There are also walking paths where you can stroll at your own pace and a street in front of the temple full of restaurants and stores. And, there's a giant Buddha! If you have a penchant for traditional architecture and want to check out this well-known temple – you're killing two birds with one stone!

ADDRESS: 245, Gagwonsa-gil, Dongnam-gu, Cheonan-si



NAVER MAP



Tongbokcheon Stream

Photo by Chihon Kim

Tongbokcheon Stream runs 10 kilometers through Pyeongtaek City and is one of the most popular bike paths amongst cyclists and locals. In the spring, this path turns into a cherry blossom spot crowded with visitors who want to enjoy the pretty pink flowers lined up along the stream. Before you hit the path, rent a FREE bike from the Pyeongtaek Public Bike Rental Shop, which you can ride along Tongbokcheon Stream. Check out the this edition's Korea Kid's Corner for more details on how to rent the free bike. A little bit of exercise and a lot of cherry blossoms sounds like the perfect way to take in the spring air.

ADDRESS: 174 Dongsak-ro, Pyeongtaek-si
(Pyeongtaek Public Bike Rental Shop at Tongbokcheon)



NAVER MAP

Cherry blossom viewing is probably spring in South Korea with your first delicate pink flowers begin to appear in April and peak a week later. This year, they start to appear around March 21 through April 1 and arrive around March 26 through 29. Those cities have some amazing locations to get a close look at these famous blossoms. If you have crowds, make plans to visit on weekdays.

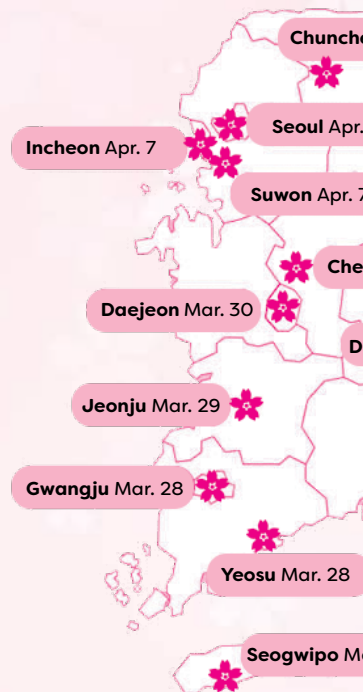
See Osan Region

CHERRY BLOSSOM

KOREA TOURISM

The news everyone has been waiting for is the forecast for 2024. This year, cherry blossoms will bloom one to seven days earlier than last year. The earliest cherry blossoms can be seen in Seoul around March 24, while Seoul will have to wait until around April 10 to see cherry blossoms in full bloom in Seoul around April 10.

For those preparing a trip to Korea, here's a list of cities to see cherry blossoms in full bloom all



Pyeongtaek
region

Daegu
region

Photo courtesy of Daegu City Hall

Riverside of Geumhogang River

DAEGU REGION

Well known for its beautiful river scenery and various spring flowers such as forsythias, the Geumhogang River Cherry blossom street is yet another fantastic spot to enjoy the warmer temperatures of spring. This spot also holds evening illuminations, so grab a sweater and head over for a magical evening walk surrounded by bright blossoms.

ADDRESS: 984-9, Geomsa-dong, Dong-gu, Daegu
Daegu Subway Metro Line 1 - get off Dongcheon Sta. - exit # 2 or 3



NAVER MAP

Cherry blossoms!

ON KIM,
S KOREA

One of the best ways to fully enjoy the cherry blossoms with family and friends. Usually you'll see the cherry blossoms in the last week of March and into early April. The forecast for Daegu shows the blossoms will start around March 25 and for Pyeongtaek, the blossoms will start around March 20.

Below are a few of the best, but to avoid crowds, it's best to visit on a weekday.

More on Page 10

CHERRY BLOSSOM FORECAST

KOREA TOURISM ORGANIZATION

Waiting for, here is the cherry blossom forecast. Daegu's cherry blossoms are expected to bloom earlier than average.

They can be seen in Jeju Island around March 10 to April 3. Usually the cherry blossoms start blooming, so you will be able to see them in Jeogwipo, Jeju after March 31 and in Seoul around April 10.

This spring, be sure to plan ahead to avoid crowds around the country.

Seoul Apr. 7

Gangneung Mar. 31

3

7

Gyeongju Mar. 31

Daegu Mar. 26

Pohang Mar. 24

Busan Mar. 22

• Information courtesy of Weather i
• Dates subject to change depending on weather conditions.

COPYRIGHTS © KOREA TOURISM ORGANIZATION.
ALL RIGHTS RESERVED
www.visitkorea.or.kr

Mar. 24



Daegu E-World

Photo courtesy of E-World



WEBSITE

This theme park features a 1.4-km-long road lined with cherry blossoms. Love taking photos to share on SNS? You'll spot the more than 83 spots for snaps in the park where the delicate blossoms become the perfect backdrop for your Instagram photo-shoot. And, make plans to stay into the evening, as the pink neon lights go up and the cherry blossoms put on a vibrant glowing display. The cherry blossom festival at E-World is one of the must-visit events for Daegu residents during the season.

FESTIVAL: Sat., Mar. 16 - Sun., Apr. 4
ADDRESS: 20, Duryugongwon-ro 28-gil, Dalseo-gu, Daegu



NAVER MAP



Palgongsan Mountain

Photo courtesy of Daegu City Hall

One of Daegu-area's most popular provincial parks is Mt. Palgongsan. This place is a favorite for hiking and every year the mountain goes blush with pink flowers from the many cherry blossoms trees, drawing many from near and far for a peek. Here you'll find Gatbawi, a giant stone buddha known for granting visitor's earnest wish, housed at the Donghwa Temple built in 1732. If, like me, you're not a big fan of hiking, opt for a drive through the cherry blossom-lined road called "Palgongsan-ro" that circles around the mountain.

ADDRESS: 13, Sinmu-dong, Dong-gu, Daegu



NAVER MAP



Suseongmot Lake

Photo courtesy of Suseong district

Every year, the banks of Suseongmot Lake in southern Daegu are blanketed in faux snow. The lake had been developed for agriculture during the Japanese colonial era, now serves as a great place for leisure. The king cherry trees line the 2-km-long lakeside make it an ideal spot for a picnic or leisurely stroll. This area is host for many activities beyond flower-viewing like open-air concerts, exhibitions, and street performances. Grab a bite or a nice cup of coffee at the many outdoor cafés and restaurants by the lake. As a bonus, the nearby Suseongland, a small amusement park, is a great spot for kids!

ADDRESS: 512, Dusan-dong, Suseong-gu, Daegu



NAVER MAP



Yeungnam University

Photo courtesy of Yeungnam University

Yeungnam University, which boasts the second-largest campus size on the Korean Peninsula, is a wonderful place to visit in spring when it is covered in cherry blossoms. Make a plan to spend a half-day walking along the cherry tree-lined paths and picnicking in its open knoll behind the university. As a bonus, there is a folk village where you can take in the charm of the architecture. The highlight of the place is "Love Road," a romantic, a tunnel created by the cherry blossoms. It is said that couples who are interested in each other can fall in love together if they walk down the road without looking back until they've reached the end.

ADDRESS: 280, Daehak-ro, Gyeongsan-si, Gyeongsangbuk-do
Take Daegu Metro Line 2 (green) - get off Yeongnam University Station - exit3 or 4



NAVER MAP

CONTINUED FROM PAGE 9

Osan
RegionOSAN
REGION

Osancheon Cherry Blossom Road

Photo courtesy of Osan City Hall

Considered as one of the prettiest spots for cherry-blossom viewing in Osan, Osancheon (오산천 벚꽃길) that runs across the city is an ecological park, a home to resident birds such as mandarin duck, kestrel, white heron and more.

Take a relaxing stroll along the riverside promenades and gardens with thousands of cherry trees planted along the stream. When you go there, don't forget to swing by octagonal pavilion(팔각정), a beautiful photoshoot location. Spring is not just a great time to visit the road for its popular cherry blossoms. Every spring, beautiful orsythia in full bloom also greet visitors here.

Another good way to see cherry blossom at this place is from the seat of your bike. Here you'll find a path that will take about a 20-minute bike ride where you'll be surrounded by cherry blossom trees and a shower of petals. Too short to ride a bike? Don't worry, the road is connected with Sinricheon and Dongtan Lake Park which great spots for cherry blossom viewing and longer rides.

ADDRESS: 10, Nojak-ro, Hwaseong-si



NAVER MAP

Osan Mal-geum-teo Park

Photo courtesy of Osan City Hall

Situated in the southern region of Osan, the Mal-geum-teo Park (오산말씀터공원) is primarily a cherry blossom viewing spot during the spring season. This park originally a home to a sewage treatment plant serving Osan, turned into a great park that features sculptures, attractions and open space in 2005.

The park is gorgeous at any time of year. But in the spring, several sections light up with pink blossoms, plum blossoms, forsythia and rape. Look for a pink weeping cherry trees put on a breathtaking, pastel show, when their elegantly arched branches bloom pale pink flowers.

Inside the park, Osan Ecorium allows visitors a glimpse of the process of recycling. The museum has a 76-meter-high observatory offering stunning views of the whole city including the park full of cherry blossoms. This kids-friendly park has swimming pool, fountain square, eco pond and even rabbit hutch where you can feed bunnies.

ADDRESS: 115-1 Nueup-dong, Osan-si
ENTRY: Free (Open throughout the year)



NAVER MAP

Mulhyanggi Arboretum

Photo courtesy of Gyeonggi Province

With 19 different themed gardens with over 1,920 different plants and flowers, the Mulhyahgii Arboretum (물향기 수목원) is the perfect spot for a walk in all seasons. Spring is an especially glorious time to enjoy cherry blossoms along with other flowers.

The path in the garden is a mixture of level walkways and challenging hills. The garden features many unique themed sections to explore, including Mankyungwon, which is comprised of vines and creepers, Yousilsoowon where trees that bear edible fruit are planted, and Korea's Pine Exhibit.

It's only 30-minute drive from Osan Air Base or it is also accessible via the subway. Take the subway from Songtan Station to Osan College Station. From there it's only a short five-minute walk to the arboretum. Make sure to pick up a map at the front entrance or it would be easy to find yourself wandering around all afternoon!

ADDRESS: 211, Cheonghak-ro, Osan-si
ENTRANCE TICKET ADULTS: 1500 won/ Teenagers (Ages 13 - 18): 1000 won/ Children (Ages 12 and under): 700 won *Free admission: Preschoolers, senior citizens (ages 65 & older)

HOURS: 9 a.m. to 6 p.m. (Mar. - Oct.), 9 a.m. to 7 p.m. (Jun. - Aug.), 9 a.m. to 5 p.m. (Nov. - Feb.) * Last admission is one hour before closing. * Closed on every Monday

PARKING FEES: Compact cars 1,500 won / Small & medium cars 3,000 won / Large cars 5,000 won

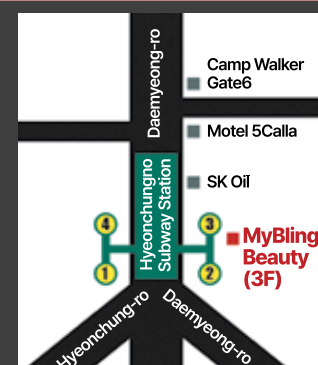


NAVER MAP



**Treat yourself
to beautiful nails**
Make your day! **My Bling Beauty**

Located Near Camp Walker Gate6 / Military ID holders **20% DC**
MANICURE, PEDICURE, ACRYLIC, GEL, EYELASHEXTENSION, WAXING



3F, 216, Daemyeong-ro,
Nam-gu, Daegu

Tue~Sat. 11:00~21:00

070-8747-2414

010-6376-2414

Myblingbeauty

Top 5 cherry blossom spots with festivals!

BY HYEMIN LEE,
STRIPES KOREA

As spring unfolds from March to May, Korea becomes a canvas of beautiful colors with blooming flowers under the warm sun. The highlight of this season is undoubtedly cherry blossom viewing!

These delicate blooms are captivating but disappear in the blink of an eye. So, planning ahead is crucial to seize this fleeting spectacle! Many best cherry blossom spots host festivals, adding more excitement to the viewing. Here are the top 5 cherry blossom spots featuring festivals. lee.hyemin@stripes.com

1. Jinhae - Naval Port Festival (Gunhangje)

Jinhae is a district of Changwon City in the south, known for its famous Gunhangje cherry blossom festival. Crowds flock to witness Jinhae's mesmerizing beauty embellished with around 360,000 cherry blossom trees.

The unique feature of the festival is its blend of military themes with cherry blossoms. The festival features captivating military airshows, parades, and the Military Band & Honor Guard Festival from both ROK and U.S. military branches. Of course, you can find a variety of outdoor markets and activities, including food trucks, too!



Photo courtesy of Korea Tourism Organization

- * **DATE:** Sat., Mar. 23 – Mon., Apr. 1 (10 days)
- * **FESTIVAL LOCATIONS:** Jungwon Rotary, Gyeonghwa Station, Yeojwacheon Stream, Jinhae Tower, Jungang Market, Naval Academy, U.S. Naval Base CFAC, and more.

2. Jeju Cherry Blossom Festivals



Jeonnon-ro Road

Photo courtesy of Jeju city



Noksandro Road

Photo courtesy of Korea Tourism Organization

Many wonder about the best time to visit Jeju, but March to April is undoubtedly the best as it is the blooming time for both canola flowers and cherry blossoms on the island! Cherry blossoms bloom from mid-March to early April in Jeju.

There are numerous magical cherry blossom spots including Jeju University, Jeonnon-ro Road, Aewol-eup Town, Samseonghyeol Shrine, and Noksandro Road. Notably, Noksandro Road offers a fantastic collaboration of canola flowers and cherry blossoms.

Two cherry blossom festivals are held in Jeju, featuring various event booths, flea markets, street food, performances and more.

JEONNON-RO ROAD CHERRY BLOSSOM FESTIVAL

- * **DATES:** Fri., Mar. 22. – Sun., Mar. 24
- * **ADDRESS:** Samdo 1dong

AEWOL-EUP KING CHERRY BLOSSOM FESTIVAL

- * **DATE:** Sat., Mar. 23 – Sun., Mar. 24
- * **ADDRESS:** 1167-9 Jangjeon-ri, Aewol-eup



NAVER MAP
(JEONNON-RO ROAD)

3. Han River Park - Yeouido Spring Flower Festival

Enjoy a stunning view of the Han River and the magnificent cherry blossom path in Seoul while picnicking, cycling, taking a yacht or boat cruise and sampling all the delicious festival foods.

The Yeouido Spring Flower Festival takes place at Yujung-ro Road near the National Assembly Building. In the festival, you can enjoy various food trucks, parades, performances, activities and photo zones.



Photo courtesy of Yeongdeungpo Cultural Foundation

- * **DATE:** Wed., Mar. 27 – Sun., Mar. 31
- * **ADDRESS:** Line 9 National Assembly St. Exit 1 / Yeoui-ro 60-2



NAVER MAP

4. Seokchon Lake Cherry Blossom Festival

This beautiful urban lake in Seoul is painted with pink cherry blossoms while boasting harmonious blend of the national tallest skyscraper Lotte Tower, and Lotte World Adventure.

During the festival, various events full of youthful energy are held such as busking, event booths, flea markets, and more. Also, the neighborhood nearby the lake is Songridan-gil Street, where trendy cafes and restaurants with outdoor terraces line up.



Photo courtesy of Korea Tourism Organization

- * **DATE:** Wed., Mar. 27 – Sun., Mar. 31
- * **ADDRESS:** Line 2 & 8. Jamsil Station Exit 2

5. Nami Island Cherry Blossom Festival

If you missed the cherry blossom viewing season in the south, head to Nami Island where a variety of blush blooms and other spring flowers arrive throughout April!

Nami Island's festival spans from two to three weeks and features live performances on the weekends, activities and markets.



Photo courtesy of Nami Island

- * **DATE:** From early to late April (more info on the website)
- * **ADMISSION INCLUDING ROUND TRIP FERRY:** Adults 16,000 won / Teens 13,000 won / Children 10,000 won



WEBSITE

**BEST IN PACAF
2019-2022**

Conference Room
Mustang Café
Business Center
Fitness Room

TURUMI LODGE

Cultivating a Legendary Experience
OSAN AIR BASE, KOREA

Do you have friends & family visiting soon? Or do you just need a time out?
Make reservations at the most comfortable and affordable place in town. Room rate is \$63.00 per night for all rooms.
Space Available reservations can be made for up to 120 day in advance. Turumi Lodge operation 24 hours, 7days a week.

DSN: 315-784-1844 Comm: 82-31-661-1844 E-mail: turumilodge.reservat@us.af.mil

www.dodlodging.net www.51fss.com

Gyeongju City

Capital of ancient Korean kingdom top cherry blossom destination

STORY AND PHOTOS BY HYEMIN LEE,
STRIPES KOREA

If you're planning a special trip during cherry blossom season, you should check out Gyeongju City, the ancient capital of Silla Kingdom, as it's one of the most beloved destinations to see the blooms.

There were three kingdoms in ancient Korea, and Silla unified the three kingdoms. From the beginning to the end of Silla, Gyeongju, previously called "Seorabeol," was the capital for a thousand years.

Today, this historical city preserves the glorious history of Silla and is referred to as "a museum without walls." Here you'll find the most of Korea's UNESCO World Heritage sites concentrated in one city. The city attracts visitors year-round, but its historical buildings and streets are transformed when the cherry blossoms make their yearly appearance. Check out Gyeongju's top 7 cherry blossom spots, perfect for enjoying the city's cultural assets and the season's pale pink beauty!

lee.hyemin@stripes.com

Cherry blossom season: March 22 – Early April

Gyeongju Cherry Blossom Festival

DATE: Friday to Sunday, March 22 – 24

ADDRESS: 493-26 Hwangnam-dong, Gyeongju-si
[Daereungwon Stone Wall Trail]



NAVER MAP

1. Cheomseongdae Observatory (첨성대)

The symbolic landmark of Gyeongju, Cheomseongdae was constructed in 633 during the reign of Queen Seondeok for star observation to forecast the weather. Cheomseongdae is the oldest astronomical observatory in Asia, preserving its original appearance for 1,400 years. Both daytime and evening are great to take a trip around the flower garden of this scientific stone building.

* **HOURS:** 9 a.m. – 10 p.m.
(Open all year)

* **ENTRANCE FEE:** Free



Photo courtesy of Korea Tourism Organization

2. Daereungwon Tomb Complex (대릉원)

These giant tumuli are placed through downtown Gyeongju, marking the city's past and present. Make sure to take your time to wander the 23 ancient tombs belonging to the kings of the Silla era. Don't miss the Gyeongju Cherry Blossom Festival held at the Daereungwon Stone Wall Trail to enjoy a variety of food and activities among the royal tombs surrounded by cherry blossoms!



Photo courtesy of Korea Tourism Organization

* **HOURS:** 9 a.m. – 10 p.m.
(Open all year)

* **ENTRANCE FEE:** Adults 3,000 won / Youth 2,000 won / Children 1,000 won

3. Donggung Palace & Wolji Pond (동궁과 월지)

Donggung Palace and its adjacent Wolji Pond were originally part of the royal grounds and banquet venues for princes of the Silla era. The palace and the pond are a must-visit, especially in the evening, to see the spectacular scene of illuminated palaces and trees reflected in the water.

* **HOURS:** 9 a.m. – 10 p.m.
(Open all year)

* **ENTRANCE FEE:** Adults 3,000 won / Teenagers 2,000 won / Children 1,000 won



Photo courtesy of Korea Tourism Organization

4. Woljeonggyo Bridge (월정교)

& Gyochon Hanok Village (교촌한옥마을)

The bridge is built over the Namcheon Stream and located right next to Gyochon Traditional Hanok Village. In the daytime, walking from the bridge through the village is a great way to enjoy viewing canola flowers and cherry blossoms along the stream. In the evening, don't miss the stunning night view of the bridge and stream.



* **HOURS:** 10 a.m. – 10 p.m.
(Open all year)

* **ENTRANCE FEE:** Free



5. Bomunjeong Pavilion (보문정)

This park was named by CNN as one of the "Beautiful scenic locations in Korea." When you visit, you'll see why. Bomunjeong's ponds and pavilion are stunning, but especially in the spring with cherry blossoms and fall for its amazing autumn leaves. This place is open anytime without an entrance fee.



Photo courtesy of Korea Tourism Organization

6. Bulguksa Temple (불국사) & Seokguram Grotto (석굴암)

The foremost Buddhist heritage sites of Korea, Bulguksa Temple and Seokguram Grotto are both located on Tohamsan Mountain. These two cultural sites are within eight kilometers from each other, making them easy to explore on the same trip. Bulguksa Temple is especially a famous spot for the double-layer type of cherry blossoms that usually flower two weeks later than regular ones.



Photo courtesy of Korea Tourism Organization

* **HOURS (BULGUksA):** 9 a.m. – 5 p.m. (Open all year)

* **HOURS (SEOKGURAM):** 9 a.m. – 5:30 p.m. / 8 a.m. – 5:30 p.m. (Open all year)

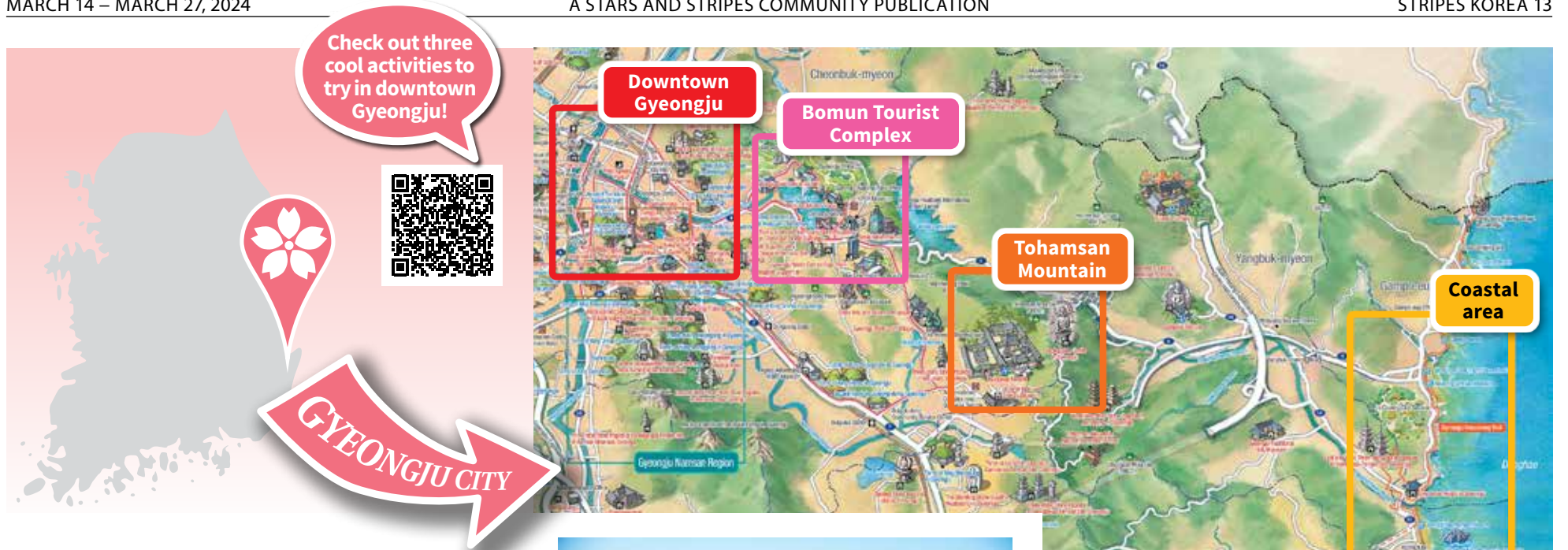
* **ENTRANCE FEE:** Free

7. The Nine-story Pagoda of Hwangnyongsa (황룡사 9층 목탑)



Photo courtesy of Korea Tourism Organization

You can capture one of the most unique landscapes in Korea on the road lined with cherry blossoms in front of this beautiful pagoda tower. Originally built in 643 during the reign of Queen Seondeok, it symbolizes aspirations for the protection of the nation and the sanctity of Buddhism. The tower is a recreation based on the original pagoda.



Map courtesy of Gyeongju Tourguide

Trip tips!

1

Plan ahead

Gyeongju is not only a historical city with numberless cultural assets from the Silla era and Joseon Dynasty, but also a coastal city with a variety amusement parks and resorts. Plan ahead so you can prioritize the spots you really want to see.



Photo courtesy of Gyeongju Tourguide

2

Choose from the city's important districts

With a plenty of destinations, here are the top districts in Gyeongju to check out.

- ✿ **DOWNTOWN GYEONGJU:** The most important attractions of Gyeongju are located within walking distance here.
Cheomseongdae, Woljeonggyo Bridge, Daereungwon, Donggung and Wolji, Gyeongju National Museum, Hwangridan-gil Street (food & dessert street) and more.
- ✿ **BOMUN TOURIST COMPLEX:** Gyeongju World (amusement park), Bomunjeong, Bomun Lake, Gyeongju Expo Park, and more.
- ✿ **COASTAL AREA:** Tomb of King Munmu, Jeonchon Pine Beach, Gampo Port, Songdaemal Lighthouse and more.

3

Try to stay at a special accommodation

Staying at a traditional house (hanok) hotel is very affordable in Gyeongju. They are usually located near the mountains but not far from downtown. It's absolutely a must-try experience to spend a night at a traditional house surrounded by peaceful forests and mountains. Also, Gyeongju is a famous glamping (glamorous camping) spot in the summer and fall because of its beautiful nature.



Tips for viewing cherry blossoms

1

Check the time and weather

Check the flowering and peak time of the area you're planning to view cherry blossoms in full bloom. Make sure to go on a trip before a heavy rain comes.

2

Prepare picnic items

Bring a picnic mat, blanket, Bluetooth speaker and bunch of food and drink to chill under cherry blossom trees. You can prepare or simply buy them near the viewing areas.

3

Expect crowds

During cherry blossom season, most of the best viewing spots will be crowded and there will be limited parking. Bring comfortable shoes because you'll likely be walking a lot.

4

Take photos

Blink and cherry blossom season will be over. Don't hesitate to take photos and selfies with the beautiful blossoms while they're around!



IT'S HERE, IT'S NOW

AFN | now

Streaming video service

afn-now.myafn.net

QR codes for Google Play and App Store

Ready, Set,

AFN go

LISTEN NOW

afngo.net

QR codes for Google Play and App Store

www.yonseiuuro.com

Daegu Yonsei S Urology

American doctor qualification authentication (ECFMG 0-666-991) in compliance with the urologic medical specialist

MEDICAL TREATMENTS

- STD Diseases
- Prostate Disorders
- Circumcision
- Vasectomy
- ED

Reservation and Consultation (053) 253-5825

연세대학교의학과 Daegu Yonsei Urology



Photos courtesy of Gyeongnam province



3 retro travel destinations in Gyeongnam

•Seoul

SOUTH KOREA

Gyeongnam

GSA in Korea

GSA Global Supply® is now storing and delivering approximately 750 high-demand National Stock Number (NSN) items formerly stored in and shipped from the continental United States. The change reduces delivery time to a few days from weeks or months.

Customers can order using GSA websites (GSA Global Supply or GSA Advantage!®) or via existing customer logistics platforms (e.g., GCSS-Army). GSA's systems recognize the items stocked in Korea and fulfill orders locally. Other items will ship from the mainland. An electronic catalog is available.



Ron Easley

The program does not replace existing retail stores managed by GSA in Korea. For more information, please contact your local Customer Service Director Ron Easley at ron.easley@gsa.gov.

Check Out GSA's Korea Catalog!



Scan this QR code to view
GSA's Korea catalog.

GSA Global Supply®
Your Reliable Government Source

Stripes Korea is A Stars and Stripes Community Publication. This newspaper is authorized for publication by the Department of Defense for members of the military services overseas. However, the contents of Stripes Korea are unofficial, and are not to be considered as the official views of, or endorsed by, the U.S. government, including the Department of Defense or the U.S. Pacific Command. As a DOD newspaper, Stripes Korea may be distributed through official channels and use appropriated funds for distribution to remote and isolated locations where overseas DOD personnel are located. The appearance of advertising in this publication, including inserts or supplements, does not constitute endorsement of those products by the Department of Defense or Stars and Stripes. Products or services advertised in this publication shall be made available for purchase, use, or patronage without regard to race, color, religion, sex, national origin, age, marital status, physical handicap, political affiliation, or any other nonmerit factor of the purchaser, user, or patron.

HAPS KOREA MAGAZINE

For those looking to discover some nostalgia for the older-style Korea, why not embark on a journey through time with these charming retro travel destinations in Gyeongnam, evoking emotions and creating lasting memories for adults while sparking curiosity in children.

Here are three travel destinations for an old-school cool feeling recommended by Gyeongnam province.

Tongyeong Bongsutgol Alley

Nestled in Bongpyeong-dong, Tongyeong Bongsutgol Alley is a quaint neighborhood adorned with bookstores, photo studios, and cafes — a perfect spot for leisurely strolls.

Explore the Jeon Hyuk-rim Art Museum, a beautiful exhibition hall showcasing over 7,500 ceramic tiles featuring the works of the 'magician of color' and his son.

Adjacent is the Spring Day Bookstore, housed in a renovated abandoned house, where you'll find local stories and wall writings by renowned artists.

The alley exudes retro charm with establishments like Johee Beauty Salon, Jin Lee Yongwon, and medicinal water baths, providing excellent photo opportunities.

Geoje Stationery Stores

Wander through the alleyways of Geoje, discovering charming shops and stationery stores with a nostalgic ambiance.

Favorites include Munchae's corner store and Mimi's Stationery, known for retro props, school supplies, and nostalgic snacks.

Experience the joy of making old arcade games and dalgona, reminiscent of Korean childhood pleasures.

The stores, adorned with retro decorations resembling 1970s-1980s bedrooms and theaters, stir



up nostalgia in adults while offering delightful toys for children, breaking away from the digital age.

Gimhae Jinyeong Station Railway Museum

Opened in 1905 and operational for 105 years, the Jinyeong Station Railway Museum now resides in the renovated old Jinyeong Station.

Step back into the history of the old station through photo zones, vintage railroad models, and displayed tickets.

Engage in an engineer experience with videos filmed on the

Mugunghwa train, reviving memories of local trains and simpler stations before the era of high-speed trains.

The monthly themed exhibition room welcomes citizen participation, offering a diverse range of exhibits.

Outside, the Rose of Sharon, once running on the old railroad, stands as a testament to the rich history of the area.

For additional details on these retro travel destinations, refer to the Gyeongnam Tourism Guide website.

haps
MAGAZINE KOREA
hapskorea.com



WEBSITE



Stripes Sports Trivia

SAY MY NAME! In a 2004 ALCS filled with many memorable moments, mine almost gets lost among “the bloody sock” and the fact that my Red Sox team became the first to win a series after trailing three games to none. After Kevin Millar drew a walk from Mariano Rivera, I pinch ran for him and soon pulled off what some now refer to as “the steal.” Who am I?

Answer *Dave Roberts*

100 Hours Fundamental Course

Permanent Make-up Education & Training Course P.M.U Curriculum

Infection Control, Bloodborne Pathogen, Pigments/Inks consist, Technical Application, Anatomy & Physiology, Diseases & Disorders, Regulations, Legal, Client Management, Documentation.

Permanent Make-up Services

Eyebrow, Eyeliner, Lip Blush, Tint Lip, Scalp Micropigmentation, Paramedical, Tattoo, Eyelash Lift, Eyelash Extension, Skin Care.

Military to civilian life After The Military

New Life Challenges and Successful Life After Discharge Challenge yourself to a business that makes people beautiful.

Website spcp.org . koreaspcp.kr

F4, 193, Gumi-ro, Bundang-gu, Seongnam-si, Gyeonggi-do, Republic of Korea , zip code 13621
Phone. +82-10-7139-3929 Mobile. +82-10-3897-0717

Large or small, standard or custom, we have a wide range of printed products to suit your project!

STARS & STRIPES DoD authorized printer

PRINTSHOP

printshop.stripes.com

Get a quote or place your order at printshop.stripes.com or call (315)227-7315.

Getting out of the Military?

You should start the Transition Assistance Program

18 Months before ETS
24 Months before Retirement

*Must start 12 months before ETS

To Get Started

Go to: <https://portal.armytap.army.mil>

Or visit us in person

USAG Humphreys
Maude Hall, W-301
DSN: 757-2101
Comm: 05-033-57-2101
Or visit your local TAP Center

DID YOU KNOW?

For many Koreans, seaweed soup (miyeokguk) is the iconic food that symbolizes a birthday. Seaweed soup is known as healthy food rich in calcium and iodine in Korea, so traditionally, it has been served to mothers recuperating after giving birth. The custom of eating seaweed soup on birthdays means feeling gratitude to your mother who went through birth pangs by eating the same food that your mother had after childbirth. Approximately 90% of the world's seaweed used for consumption comes from South Korea.

Hangul of the week

생일

Saengil (Birthday)

Language Lesson

Happy Birthday!

Saengil chukha-haeyo!
(생일 축하해요!)

Crossword

by Margie E. Burke

ACROSS

1 "___ we forget"

5 Salon service, briefly

9 Water park feature

14 Initial chip

15 Fever with chills

16 Former Russian leader

17 Tech support caller

18 Not too bright

20 Palace figures

22 Intrepid

23 Macho dude

24 Luxury watchmaker

25 Of the Vatican

27 Storage medium

30 West African country

33 De Niro's "Goodfellas" co-star

36 Gardner of film

37 Payback seeker

39 Piece keeper?

41 Faddish disk of the '90s

42 Forest worker

44 Composes

45 Credit card motion

47 Washing machine cycle

49 Defame

52 Macaroni shape

56 Religious offering

58 Sandwich meat

59 Whip

61 Kind of tea

62 Baby-to-be

63 Landfill emanation

64 NASA scrub

65 Word with tooth or heart

66 Part of A.P.R.

67 Chew like a squirrel

DOWN

1 Bust a gut

2 Occur as a result

3 Pressing need?

4 Small turtle

5 Mountain route

6 Something that's bruisable

7 Mark who plays the Hulk

8 Taxi feature

9 Like some errors

10 Good as new

11 Review unfairly

12 No-win situations?

13 Stopping points

19 Stetson, e.g.

21 Paternity identifier

24 Terrier type

26 Court statement

28 Place to broil

29 Big name in candy

30 Navigator's aids

31 State confidently

32 Lay down the law?

34 "A League of ___ Own"

35 Conflicted

38 Part of G.O.A.T.

40 Grade school subject

43 1980s invasion site

46 Deadly epidemic

48 Deep blue

50 Zippo

51 Great sadness

53 Breakfast strip

54 Last Greek letter

55 Lehar operetta "The Merry ___"

56 Rubs out

57 "Black ___" (2021 Marvel movie)

58 Very dry

60 Day care candidate

Copyright 2024 by The Puzzle Syndicate

Answers to Previous Crossword:

S	C	A	D	C	A	R	P	S	L	I	C	K
P	O	C	O	O	B	E	A	H	A	N	O	A
E	C	H	O	D	E	P	R	E	S	S	A	N
A	C	E	R	B	A	T	E	D	L	E	N	N
R	I	S	K	Y	T	A	N	N	E	R	Y	
				N	A	P	O	L	E	O	N	
S	C	H	O	L	A	R		R	E	D	T	A
L	I	A	B	L	E		T	E	R	S	E	R
O	A	R	S	M	A	N		A	I	R	I	E
T	O	N		E	N	O	U	N	C	E	S	
		E	R	A	S	I	N	G	S	K	I	R
E	S	S	E	N		S	A	U	N	T	E	R
R	E	S	I	S	T	I	B	L	E		L	A
G	L	E	N		O	L	L	A	S		E	T
O	L	D	S		M	Y	E	R	S		S	E

SUDOKU

Difficulty: Medium

	1		2				3	
9	8		1					
				5	9			1
6							4	
	4	7			3	8		9
		9		8			1	7
8		4						
	9	2	7		1		6	8
					2	4		

Copyright 2024 by The Puzzle Syndicate

Edited by Margie E. Burke

HOW TO SOLVE:

Each row must contain the numbers 1 to 9; each column must contain the numbers 1 to 9; and each set of 3 by 3 boxes must contain the numbers 1 to 9.

Answer to Previous Sudoku:

6	1	5	8	9	4	3	2	7
7	9	2	1	3	5	8	6	4
8	4	3	7	6	2	1	5	9
4	6	8	3	7	9	5	1	2
9	5	1	2	4	6	7	8	3
3	2	7	5	8	1	4	9	6
1	3	9	6	5	7	2	4	8
2	8	6	4	1	3	9	7	5
5	7	4	9	2	8	6	3	1

Car friend

자동차 친구

Experience special detailing offers as our gratitude for your car purchase!

QUALITY PREOWNED SELECTION

<p>BMW 4 Series 420d Coupe Luxury (Diesel) 2014 model/97,631 miles</p> <p>\$9,990</p>	<p>Mercedes-Benz C Class 220d Avantgarde (Diesel) 2019 model/37,348 miles</p> <p>\$21,990</p>	<p>BMW 3 Series 320d Xdrive (Diesel) 2015 model/96,032 miles</p> <p>\$8,999</p>	<p>Ford Taurus 3.5 Limited (Gasoline) 2011 model/99,148 miles</p> <p>\$2,699</p>	<p>BMW 750Li (Gasoline) 2008 model/92,368 miles</p> <p>\$4,599</p>	<p>Hyundai Avante HD S16 Luxury (Gasoline) 2009 model/55,457 miles</p> <p>\$2,599</p>
--	--	--	---	---	--

윤형석(David Yun)
대표/CEO

Phone: 010.8946.0779
Office: 031.654.4777
Fax: 031.654.4770
Email: car.friend.vehicle@gmail.com

FOUR
POINTS
BY SHERATON



TRAVEL REINVENTED

Get what you're looking for with the style and service you want, all at a great price. We have what matters most to you like a comfortable bed, delicious breakfast and great coffee. Plus free internet and free bottled water, great local beer with Best Brews™ and more. Whether you're in town for work or just for fun, you're in for a great stay with Four Points.®

Special Offer 1.
U.S. Military Exclusive Offer

- (1) night stay in Premier Double Room
- (1) Buffet breakfast per night
- (1) In-room Dining Menu
- (1) Soft Drinks with IRD Menu
- Laundry Service per night

Special Offer 2.
Sweet Suite Sale

- Up to 20% off for minimum 2 nights at Premier Room or Suite
- 30% off for minimum 2 nights at Penthouse

Four Points by Sheraton Seoul, Gangnam

BOOK NOW AT [MARRIOTT.COM/SELF](https://www.marriott.com/SELF)
OR CALL 82 2 2160 8990

MEMBER OF
MARRIOTT BONVOY™

© 2020 Marriott International, Inc. All Rights Reserved.