

CANAAN Realty
 Since 2003
 031-691-0079
 Facebook.com/RealtyCANAAN
 www.CANAANRealty.net

INSIDE INFO



HAVE A BEAR-Y GOOD TIME AT BEAR TREE PARK
 PAGE 2



MONSTER SWEET SHOP PASSES MUSTER WITH FLYING COLORS
 PAGE 6



COEX MALL HOME TO AWE-INSPIRING MARINE LIFE
 PAGE 11



5 TOURIST ATTRACTIONS IN BUSAN WORTH A LOOK
 PAGE 13



Hunting for special souvenirs at **Namdaemun Market!**

Pages 8-10

H&R BLOCK
 HUMPHREYS Tel: 070-7727-6100
 OSAN AB (K-55) Tel: 070-7597-0132
 CAMP WALKER Tel: 070-7725-9887
 ITAEWON OFFICE Tel: 02-795-7555
 www.hrblock.kr

5 HIKING COURSES
 in Seoul for all skill levels
PAGES 4-5

Medical Capital of Korea
MEDI-CITY+ DAEGU
 +82-53-253-1561

DAEGU MEDICAL TOURISM SERVICE
ONE-STOP MEDICAL SERVICE

Dentistry
 Korean Medicine
 Dermatology
 Plastic Surgery

KOREA KIDS' CORNER

Have a bear-y good time at Bear Tree Park

STARS AND STRIPES

www.stripes.com

Max D. Lederer Jr.
Publisher

Laura Law
Chief Operating Officer

Lt. Col. Marci Hoffman
Commander

Michael Ryan
Chief of Staff

Scott Foley
Revenue Director

Chris Verigan
Engagement Director

Marie Woods
Publishing and Media Design Director

Chris Carlson
Publishing and Media Design Manager

Eric Lee
Advertising and Circulation Manager

Enrique "Rick" W. Villanueva Jr.
Korea Area Manager

Jinsun Song
Operations Manager

Kentaro Shimura
Production Manager

Rie Miyoshi
Engagement Manager

Denisse Rauda
Publishing and Media Design Editor

Publishing and Media Design Writers

Shoji Kudaka

Hyemin Lee

Takahiro Takiguchi

Layout Designers

Kazumi Hasegawa Mamoru Inoue

Yuko Okazaki Kayoko Shimoda

Multimedia Consultants

Max Genao Doug Johnson

Hans Simpson Chae Pang Yi

Benjamin Yoo Gianni Youn

Robert Zuckerman

Graphic Designers

Yukiyo Oda Kenichi Ogasawara

Yosuke Tsuji

Sales Support

Ji Young Chae Hiromi Isa

Yoko Noro Toshinori Numano

Yusuke Sato Kanna Suzuki

Saori Tamanaha Toshie Yoshimizu

For feedback and inquiries,
contact MemberServices@Stripes.com
To place an ad, call DSN 755-2255
korea.stripes.com/contact



Photo by Bear Tree Park



BY HYEMIN LEE,
STRIPES KOREA

Encounter hundreds of adorable bears at Bear Tree Park, a family-friendly spot in Sejong City, just 45 kilometers (28 miles) away from Camp Humphreys. The park is an arboretum and zoo covering over 330,000 square meters.

While exploring this wonderland, you can encounter not only around a hundred moon bears (Asian black bears) and brown bears, but also other animals like deer, peacocks, and mandarin ducks. Moreover, its vast pond hosts thousands of colorful koi fish.

The park is also home to over 1,000 species of flowers and trees, including rare pine trees, deciduous trees, junipers, roses, wildflowers and more. Stop in at the greenhouse for a close look at tropical plants and other botanical beauties.

Kids can participate in various programs which allow them to interact with the animals. Visitors can also purchase animal food to feed the bears, koi fish, deer, and goats, making it a great experience for all the animal lovers in your family.

Throughout the year, Bear Tree Park also has exciting events and festivals, so don't miss out. Furthermore, make sure to visit during different seasons to enjoy the spring and fall landscapes the park has to offer. Coming up from mid-October to early November, make plans to check out the foliage festival, which will showcase the captivating beauty of autumn colors.

lee.hyemin@stripes.com



Photo by Korea Tourism Organization



Photos by Bear Tree Park



ADDRESS: 217 Sinsong-ro, Jeondong-myeon, Sejong

HOURS: 9 a.m. – 6 p.m.

PHONE: 044-866-7766

TICKETS: 12,000 won (adults) / 10,000 won (teens) / 8,000 won(kids)



NAVER MAP



WEBSITE

Your Summer Travel Could Earn You 40K Bonus Points¹

Open a Flagship credit card, and you can earn **40,000 bonus points** (a \$400 value) when you spend **\$4,000 within 90 days** of opening your account.¹

Plus, you'll get a free year of Amazon Prime^{®2} (a \$139 value)—on us.³

You'll also enjoy:



Hurry—offer ends **August 31, 2023.**

Apply today!

Visit navyfederal.org/flagship.

Our Members Are the Mission[®]

Navy Federal is federally insured by NCUA. ¹Offer valid for new Visa Signature[®] Flagship Rewards Credit Card accounts applied for between 3/1/23 and 8/31/23. To be eligible for the 40,000 points offer, you must make \$4,000 or more in net purchases within 90 days of account opening. Rewards are earned on eligible net purchases. "Net purchases" means the sum of your eligible purchase transactions minus returns and refunds. Eligible purchase transactions do not include, and rewards are not earned for, the following transactions: cash advances, convenience checks, balance transfers, gambling or fees of any kind, including finance charges, late fees, returned check fees, ATM cash advance fees, and annual fees, if any. Cash-equivalent transactions, such as the purchase, loading, or reloading of gift and prepaid cards (e.g., money orders, GO Prepaid Cards, and other cash-equivalent gift cards), may not be eligible purchase transactions and may not earn rewards. Please allow up to eight weeks after the 90-day period for the 40,000 points to post to your rewards balance. Account must be open and not in default at the time the 40,000 points are posted to your rewards balance. Limit of one promotional offer at account opening. ²Amazon and all related logos are trademarks of Amazon.com, Inc. or its affiliates. ³Offer applies only to annual Amazon Prime memberships. Not valid for recurring membership monthly payment option or Amazon Prime Student. Annual membership must be purchased by 12/31/23. Offer valid for your Visa Signature Flagship Rewards Credit Card and is not transferable. Limit of one promotional offer per card. Please allow 6-8 weeks after the membership is renewed or opened for the statement credit to post to your account. Navy Federal reserves the right to end or modify this offer at any time without notice. "Visa Signature Flagship Rewards Credit Cards earn 3 points for every \$1 of net purchases made on travel and 2 points for every \$1 of other net purchases. "Net purchases" means the sum of your eligible purchase transactions minus returns and refunds. Eligible purchase transactions do not include, and rewards are not earned for, the following transactions: cash advances, convenience checks, balance transfers, gambling, or fees of any kind, including finance charges, late fees, returned check fees, ATM cash advance fees, and annual fees. Cash-equivalent transactions, such as the purchase, loading, or reloading of gift and prepaid cards (e.g., money orders, GO Prepaid Cards, and other cash-equivalent gift cards), may not be eligible purchase transactions and may not earn rewards. A travel purchase may only earn 2 points per dollar spent, depending on the merchant code used to process the transaction. Travel is typically categorized under merchant category codes such as airline, hotel, car rental, bus lines, taxis, cruise lines, time shares, parking, and transit. Additional categories may be ineligible, in which case you will receive 2 points per dollar spent at these locations based on the merchant category codes. For more information, view the Flagship Rewards Program Description at navyfederal.org. © 2023 Navy Federal NFCU 14225 (4-23)

NAVY FEDERAL
Credit Union





DESIGN YOUR FUTURE

Global Citizenship

Integrity

Adaptability

Balance in Life

Empowerment



Korea International School

Pangyo Campus
Seoul Campus

www.kis.or.kr
www.kisseoul.org





5 HIKING COURSES

in Seoul for all skill levels

KOREA TOURISM ORGANIZATION

Seoul isn't just home to millions of people, it's also home to many mountains both large and small. Everywhere you look, the skyline of Seoul's tall buildings

is backed by undulating mountain ridges. From the peaks of these mountains, you can see the whole of Seoul unfold before you.

The mountains around Seoul have an average height of 410 meters, making them quite low and easy for hikers of all skill

levels. The mountains are also the perfect place to enjoy Korea's changing seasons. Especially in summer, you can enjoy the cool breeze that blows through the shaded valleys. Another attraction of the mountains is how easily accessible they are via Seoul's

extensive public transit system, with most hiking paths starting just a short walk from subway station exits. To enjoy a bird's-eye view of Seoul while in peaceful nature, select one of the courses below, available in various difficulty levels.

1. Hanyangdoseong, Seoul City Wall (Naksan Section 2.1 km) Walk through History

Hanyangdoseong, the Seoul City Wall, was built in 1396 to protect Hanseong, the then-capital city of Joseon. Currently, the old city wall is located in the middle of Seoul, and is divided into six sections. Among these, the Naksan Section is the easiest course, and offers stunning nightscape views, making it a popular choice. You can receive a commemorative badge if you walk all six sections of Hanyangdoseong and collect stamps at the designated spots.

HANYANGDOSEONG STAMP TOUR

1. Pick up a stamp tour map at one of the designated locations (Donuimun Museum Village Information Center, Heunginjimun Gate Maintenance Office, Sungnyemun Gate, Malbawi Rock Information Center).
2. While walking the Hanyangdoseong, collect stamps on your map at the stamp locations.
3. Take pictures at the indicated locations (Cheongundae Monument, Naksan Mountain summit, Site of Beacons on Mongmyeoksan Mountain, Inwangsan Mountain summit).
4. Download the application form from the Hanyangdoseong website (seoulcitywall.seoul.go.kr) and e-mail the completed form to wallwalk_apply@seoul.go.kr.
5. Submit your completed stamp tour map and photos to Hanyang Doseong Historic Site Museum or Hyehwa-dong Exhibition & Information Center for final approval to receive your commemorative badge.

DIRECTIONS: Walk from Hansung Univ. Station (Seoul Subway Line 4), Exit 4

RECOMMENDED COURSE (NAKSAN SECTION): Hyehwamun Gate – Naksan Park – Cultural Plaza – Ehwa Village – Heunginjimun Gate

REQUIRED TIME: 1 hr

DIFFICULTY: ★★☆☆☆



HANYANGDOSEONG COURSES

1. Sungnyemun Section (1 hr / 1.8 km, ★☆☆☆☆) Baekbeom Plaza – Namdaemun Market – Sungnyemun Gate – Site of Donuimun Gate & Kangbuk Samsung Medical Center / Start from Hoehyeon Station (Seoul Subway Line 4), Exit 5
2. Heunginjimun Section (1 hr / 1.8 km, ★☆☆☆☆) Heunginjimun Gate – Dongdaemun History & Culture Park (Previous Site of Dongdaemun Stadium) – Gwanghujimun Gate – Jangchung Gymnasium / Start from Dongdaemun Station (Seoul Subway Line 1, 4), Exit 6 or 7
3. Namsan Section (3 hr / 4.2 km, ★★★★★) Jangchung Gymnasium – National Theater of Korea – N Seoul Tower – Namsan Octagonal Pavilion – Baekbeom Plaza / Start from Dongguk Univ. Station (Seoul Subway Line 3), Exit 5
4. Baegak Section (3 hr / 4.7 km, ★★★★★) Changuimun Gate – Sukjeongmun Gate – Malbawi Rock Information Center – Waryong Park – Hyehwamun Gate / From Gyeongbukgung Station (Seoul Subway Line 3), Exit 3, take Bus No. 7212, 1020, 7022 to Jahamungogae, Yun Dongju Hill Bus Stop
5. Inwangsan Section (2 hr 30 min / 4 km, ★★★★★) Site of Donuimun Gate – Inwangsan Mountain summit – Yun Dongju Hill – Changuimun Gate / Start from Sodeaemun Station (Seoul Subway Line 5), Exit 4





2. Inwangsan Mountain (338.2 m) Panoramic view of Seoul

Standing atop Inwangsan Mountain is like standing in the middle of Seoul due to its location in Jongno-gu, near the center of the city. The hiking trail even starts from the middle of the city, near Gyeongbokgung Station! The path is well maintained, and is short enough that even the most inexperienced hiker can reach the summit in no time. If you're visiting with young children or someone who has walking difficulties, the Inwangsan Jarak Trail (2.5 km / 1 hr) that circles the mountain is a great choice.

DIRECTIONS: Walk from Gyeongbokgung Station (Seoul Subway Line 3), Exit 1
RECOMMENDED COURSE: Gyeongbokgung Station – Inwangsan Jarak Trail – Beombawi Rock – Inwangsan Mountain summit
REQUIRED TIME: Round-trip 2 hr 30 min
DIFFICULTY: ★☆☆☆☆



4. Gwanaksan Mountain (632 m) Path of many ups and downs

Gwanaksan Mountain isn't that large in the grand scale of mountains, but it is quite a strenuous hike, requiring adequate warm-up before starting out. You'll also want to be equipped with proper hiking boots. The trail begins with a rather flat walk, but quickly leads to repeated ups and downs as you follow the ridge line of this rocky mountain. Preparing gloves or hiking sticks can make your walk easier. If you enjoy an active lifestyle, you may even come to enjoy the roller-coaster-like walk.

DIRECTIONS: Walk from Sadang Station (Seoul Subway Line 2), Exit 4
RECOMMENDED COURSE: Gwaneumsa Temple – Madangbawi Rock – Gwanakmun Gate – Gwanaksan Mountain summit – Kkalddakgogae Pass – Seoul National Univ. Engineering Building 2
REQUIRED TIME: Round-trip 4 hr
DIFFICULTY: ★★★☆☆



3. Cheonggyesan Mountain (618 m) Stairway to Heaven

Cheonggyesan Mountain is jokingly called "cheongaesan," a Korean play on words in reference to the thousand ("cheon gae") stairs you must climb to reach the summit. While there aren't actually one thousand stairs, the mountain does seem to have an endless supply of them.

Kkalddakgogae Pass in particular was named for the sharp sound of breathing you'll produce after climbing up the steep staircase here. But if you can make it past that section, the summit will be just before you. During the summer months when it rains often, the sound of water babbling in the valley brook will keep you company.

DIRECTIONS: Walk from Cheonggyesan Station (Seoul Subway Sinbundang Line), Exit 2
RECOMMENDED COURSE: Wontegol Entrance – Wontegol Mineral Spring – Kkalddakgogae Pass – Helipad – Maebong Peak
REQUIRED TIME: Round-trip 3 hr
DIFFICULTY: ★★★☆☆



5. Dobongsan Mountain (740 m) Beautiful stone peaks

Dobongsan Mountain is located on Seoul's northern side, bordering Uijeongbu and Yangju in Gyeonggi-do. The mountain stands out for its many rocky peaks, ranging from softly rounded to sharp points. While the mountain is smaller than Bukhansan Mountain, the rocky terrain makes it a much more difficult hike. Despite this, hikers often say the hardships at reaching the summit are all but forgotten when they take in the view from the majestic rocky peaks.

DIRECTIONS: Walk from Dobongsan Station (Seoul Subway Line 1), Exit 1
RECOMMENDED COURSE: Dobong Control Station – Bomunneungseon Ridge – Dobongjuneungseon Ridge – Podaeneungseon Ridge – Sapaeneungseon Ridge – Sapaesan Mountain – Angol Control Station (9.8 km course)
REQUIRED TIME: Round-trip 5 hr
DIFFICULTY: ★★★★★

PRACTICE HIKING SAFETY

- Select a course that matches your skill level
- Check the weather report for your planned area in advance
- Do some warm-up exercises before hiking
- Stay on the designated paths
- Do not pick or eat any wild plants or mushrooms
- Descend slowly to protect your knees and ankles

HIKING APPS FOR SAFETY

- **Korea National Parks Service** – National Park Hiking Information app (Korean only)
- **Emergency Notice App** (Korean only)



MORE INFO

1330 KOREA TRAVEL HELPLINE: +82-2-1330 (Korean, English, Japanese, Chinese, Russian, Vietnamese, Thai, Malay)

■ This column was last updated in June 2023, and therefore information may differ from what is presented here. We advise you to check for updates before visiting.

COPYRIGHTS © KOREA TOURISM ORGANIZATION. ALL RIGHTS RESERVED www.visitkorea.or.kr



Left: Monster Donut & Gelato is colorful spot to get your sweetness fix near Camp Humphreys and Osan Air Base. Right: A strawberry smoothie and two strawberry frosted doughnuts from Monster Donut & Gelato in Pyeongtaek.

Monster sweet shop passes muster with flying colors

STORY AND PHOTOS BY
CHRISTOPHER GREEN,
STARS AND STRIPES
Published: August 24, 2023



The Monster Shake

How crazy is it that you can find the most amazing things when you're not looking for them.

A wrong turn on my way to meet a friend for coffee put me square in front of a building that looked like a scene from a Willy Wonka fever dream. That place is Monster Donut & Gelato.

Monster is a 20- to 30-minute drive from Camp Humphreys and Osan Air Base, but it's worth it for the Instagram selfies alone. From the outside, this retro pink-and-blue building is its own vibe. The inside is even better.

This two-story shop opened in December. The first floor is where you order mouth-watering confections like doughnuts with Oreo crumble toppings, or jam- and custard-filled pastries.

Monster also serves an assortment of drinks, coffees, teas, juices and milkshakes. Not to mention an abundance of gelato.

The menu is in English and Korean and the staff are very bubbly and enthusiastic.

Two strawberry-frosted donuts and a strawberry smoothie cost 15,000 won, or about \$11.20. The donuts were amazing, and the smoothie blew me away. Before I left, I had to get a milkshake to go.

I was very impressed with Monster Donut & Gelato. Sometimes the wrong turn can lead to the right place.

green.christopher@stripes.com
@ChrisJGreen8



Sweet talkin'

- 🍩 Hello: Annyeong-haseyo (안녕하세요)
- 🍩 Excuse me: Jeogiyo (저기요)
- 🍩 Please give me this: Igeo juseyo (이거 주세요)
- 🍩 Please give me this donut and coffee: I donuts-rang coffee-do juseyo. (이 도너츠랑 커피도 주세요)
- 🍩 To go, please: Pojang haejuseyo (포장 해주세요)
- 🍩 For here: Yeogiseo meokgo galgeyo (여기서 먹고 갈게요)
- 🍩 What's the most famous item?: Gajang ingi-maneunge mwoyeyo? (가장 인기 많은 게 뭐예요?)
- 🍩 Can you take a picture of me?: Sajin jom jjigeo jullaeyo? (사진 좀 찍어줄래요?)
- 🍩 This is so cute!: Igeo neomu gwiyeowoyo! (이거 너무 귀여워요!)
- 🍩 This is so delicious!: Igeo neomu massiseoyo! (이거 너무 맛있어요!)

Monster Donut & Gelato

LOCATION: 1294-11 Manse-ro, Wongok-myeon, Anseong-si, Gyeonggi-do
HOURS: 10 a.m. to 8 p.m. Tuesday through Saturday; closed Sunday and Monday
PRICES: Most items cost between 4,000 won and 8,000 won.
DRESS: Casual
DIRECTIONS: A 20- to 30-minute drive from the main gate at Camp Humphreys or Osan Air Base.
INFORMATION: 0507-1368-8306; monsterdonut_official on Instagram

IT'S HERE, IT'S NOW

AFN | now

Streaming video service

afn-now.myafn.net

Ready, Set,

AFN go

LISTEN NOW

afngo.net

EXCLUSIVE NEWS FROM:
STARS AND STRIPES
 www.stripes.com

Explore South Korea's modern art scene at national museum in Seoul

STORY AND PHOTOS BY
 CHRISTOPHER GREEN,
 STARS AND STRIPES
 Published: August 11, 2023

In the bustling city of Seoul, fans of art and Korean culture can always find something to see and do.

The National Museum of Modern and Contemporary Art is one place you cannot miss. It was founded in 1969 to raise art and cultural awareness through exhibitions and educational research. There are four branches, including the Deoksugung and Seoul locations in the city itself.

The Deoksugung branch is inside Deoksugung Palace in the Seokjojeon Annex, but the Seoul branch, near Gyeongbukgung Palace, is the larger space — four floors filled with five exhibits that will blow you away.

The museum offers much more than just paintings on a wall. For example, my favorite exhibit, "Game Society," explores how videogaming has influenced our society. Whether that influence is good or bad is completely up to you.

This amazing, interactive exhibition occupies the museum's entire basement floor and



Above left, right, below right: Pieces from "Back to the Future: An Exploration of Contemporaneity in Korean Contemporary Art." Below left: A piece from "Game Society," an interactive exhibit.

features nine video games that you can play and more than 30 art pieces.

Another cool exhibit is "Meditation on YouTube," a

performance art piece that's split into four parts being revealed over the next year.

Part One — "(Electronic) Meditation with Nam June Pai"

— can be viewed up until this month and features various art genres that explore how meditation is changing in today's digital society.

DIRECTIONS: 30 Samcheong-ro 5-gil, Jongno-gu, Seoul. A 15-minute walk from Gwanghwamun Station.
TIMES: 10 a.m. to 6 p.m. Tuesday, Thursday, Friday and Sunday; 10 a.m. to 9 p.m. Friday and Saturday; closed Monday.
COSTS: Admission to the museum is free; however, the exhibits themselves require a small fee.
FOOD: A café inside the museum serves coffee, tea, and sandwiches.
INFORMATION: 02-3701-9500; www.mmca.go.kr/eng



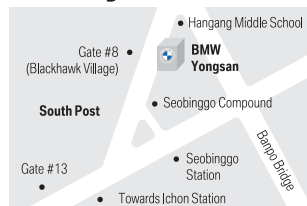
WEBSITE

On the first floor, you will find "Back to the Future: An Exploration of Contemporaneity in Korean Contemporary Art." This exhibit explores newly acquired works from the 1990s, and includes noteworthy visual artists An Jungju and Bahc Yiso.
 green.christopher@stripes.com
 @ChrisJGreen8

IT'S TIME TO EXPLORE EXCLUSIVE BENEFITS. BMW MILITARY SALES



BMW Yongsan Showroom



BMW Pyeongtaek Showroom



Please contact BMW Yongsan or Pyeongtaek Showroom for more special offers.

TEL. 1577-2696
Website www.bmwddskorea.com
Facebook www.facebook.com/BMWDirectandSpecialSales



Shopping in Korea

Hunting for special sou

Namdaemun Market

6 must-visit sections

STORY AND PHOTOS BY
HYEMIN LEE, STRIPES KOREA

Namdaemun Market is a premier destination for those seeking special souvenirs before bidding farewell to Korea. Alongside Dongdaemun (Great East Gate) Market, Namdaemun (Great South Gate) Market has stood as one of the largest traditional markets in Korea since the Joseon Dynasty.

Namdaemun Market highlights numerous types of market places and alleys selling a variety of specialized items. These markets offer countless uniquely Korean products that you won't find anywhere else! Also, the affordable wholesale prices make the shopping experience more enjoyable.

Navigating the vast size of the market can be a bit overwhelming, so check out this guidance for a successful gift hunting!

lee.hyemin@stripes.com



VIEW VIDEO



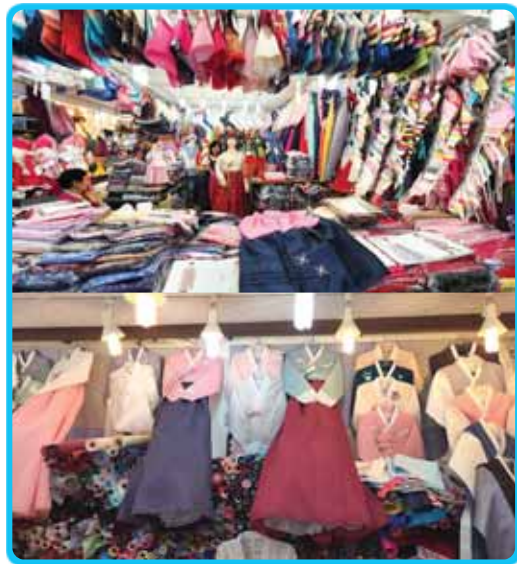
Check out the Dongdaemun Market story



Tourist Information Center

The best way to save your time and energy is visiting the tourist information center first to get a map. You can ask the friendly staff for help finding the shops selling items you're looking for, and they will kindly mark your map and provide helpful tips.

Address: Near Hoehyeon Station exit 5
Phone: 02-752-1913
Hours: 10 a.m. – 7 p.m.



Hanbok market

Hanbok is traditional Korean attire dating back to the Joseon Dynasty, and even today, it holds a special place in Korean culture. Koreans often wear a hanbok during significant occasions such as Lunar New Year or wedding ceremonies. Wearing a hanbok is a wonderful way to connect with the unique culture and tradition of Korea.

There are different types of hanboks, including modern ones that you can comfortably wear in daily life. Many foreigners who fall in love with hanbok's beauty visit this market to buy this attire as a souvenir.

In the Hanbok market, you can easily find a variety of beautiful hanboks, particularly for children and women. You can either pick a ready-made one or even go for a custom-designed hanbok, where you get to choose everything from colors to patterns and designs. Children's hanbok can be purchased starting from around 50,000 won (\$38). Customized hanboks for women usually costs between 150,000 (\$113) to 300,000 won (\$227) depending on the design.

Address: Central (Jungang) Arcade C-dong 2F



Children's fashion street

If you have kids or want to be a wonderful uncle or aunt, visiting the children's fashion street would be a lovely choice! Namdaemun Market is particularly popular as the center of the children's clothing industry in Korea. The children's fashion street boasts a collection of small shops and multi-story buildings exclusively stocked with kids' items. Each shop sells its own signature products with original designs and various fabrics. You'll discover a wide range of adorable kids' items from clothing to accessories, hats, socks and more.

Address: Near Hoehyeon Station exit 6



Address
Line 4. Hoehyeon Station exit 5
Recommended visiting hours
9 a.m. – 5 p.m. (Closed on Sunday)

Please note that many shops have different business hours, with some open 24 hours, serving as retail shops during the day and wholesale shops at night.

Trad

Nam
souven
distinct
handma
prices s

Both
traditio
like jew
smaller
steel ch
and soj

For
if the it
ditiona
their w
unique

Address

Acce

Nam
shops,
corners
Also, v
cess of
der thro
items!

Address

Und

Nam
in Kore
ket. Th
ating a
er here.

Thes
pandem
for thos
items in

The
importe

Address

Flow

Ther
ers and
will lov
did bou
blooms
things f

Peop
Parents
of rare
er shop
special

Address

Oth

- Eyew
- Came
- Kitch
- Milita



CONTINUED FROM PAGE 9

Exploring colorful local eateries at *Namsaemun Market!*

Namsaemun Market is a huge area, so snacking and meals are essential as you're likely to get hungry while exploring this extensive space! Here you'll find many street foods and dining options, so make time to grab a bite while you're enjoying the market.

Keep in mind that Namsaemun Market is closed on Sundays, which means that most street food stalls and restaurants are also closed.



Kalguksu Alley

From Hoehyeon Station Exit 5, you'll immediately find a narrow alley specializing in kalguksu (knife-cut noodle soup). This food alley is renowned for its combo meal menu that includes knife-cut noodle soup, spicy cold noodles, and bibimbap with various vegetables, for only 8,000 won. Local vendors working in Namsaemun gather around small tables, and the food is usually prepared within a minute, allowing them to grab a quick meal. Due to its affordable price and unique local vibe, this alley is a popular spot for travelers visiting the market.

Address: Kalguksu Alley in front of Hoehyeon Station Exit 5



Hotteok

For 1,500 won, you can enjoy a Korean fried pancake known as hotteok. This is a famous snack in Namsaemun. Particularly, the vegetable hotteok stands out as a well-known specialty. Filled with glass noodles and vegetables like onions and carrots, it's tastefully seasoned with soy sauce. Most locals enjoy this treat, while some foreigners might prefer a sweeter option like the sugar-filled or honey hotteok that is another favorite.

Address: In front of Hoehyeon Station exit 5 or 12 Namsaemun-ro, Jung-gu, Seoul (Two different places)



Gamegol Son Wangmandu (Homemade large dumplings)

Gamegol Son Wangmandu is one of the hottest restaurants in Namsaemun, serving up large homemade dumplings with a variety of fillings. You'll likely have to wait in line even on the weekdays, but the food is worth the wait. Don't forget to grab steamed buns with red bean paste filling, and kalguksu Korean knife-cut noodle soup. The dumplings come in both spicy and meat flavors and are also available to go.

Address: 42 Namsaemunsijang 4-gil, Jung-gu



Daedo Restaurant

Daedo restaurant is well known for its spicy marinated pork with red pepper paste, called "Red meat." If you can handle spicy food well, you'll truly enjoy the red meat. Also, this restaurant is located in the "Galchi Alley," a specialty alley selling galchi (hairtail fish) dishes. Daedo also serves up a variety of meat or fish dishes. Although it's an authentic local spot, many foreigners can find their favorite menu here such as Korean BBQ, stir-fried pork, and squid stir-fry.

Address: 12-15 Namsaemunsijang-gil, Namchang-dong, Jung-gu



Speakin' Korean

BY HYEMIN LEE,
STRIPES KOREA

Using "yo" makes a sentence formal

- Hi: Annyeong-haseyo (안녕하세요)
- Thank you: Gamsa-hamnida (감사합니다)
- How much is it?: Igeo eolmayeyo? (이거 얼마예요?)
- Can I buy it?: Igeo salgeyo (이거 살게요)
- Please give to me / I'll take it: Igeo juseyo (이거 주세요)
- Please give me a little bit of discount: Jogeum-man kkakka-juseyo (조금만 깎아주세요)
- Can I try on? (Only for clothes): Ib-eo bwado dweyo? (입어봐도 돼요?)
- Can I try on? (Only for shoes): Sinuh bwado dweyo? (신어봐도 돼요?)



EXCLUSIVE NEWS FROM:
STARS AND STRIPES
www.stripes.com

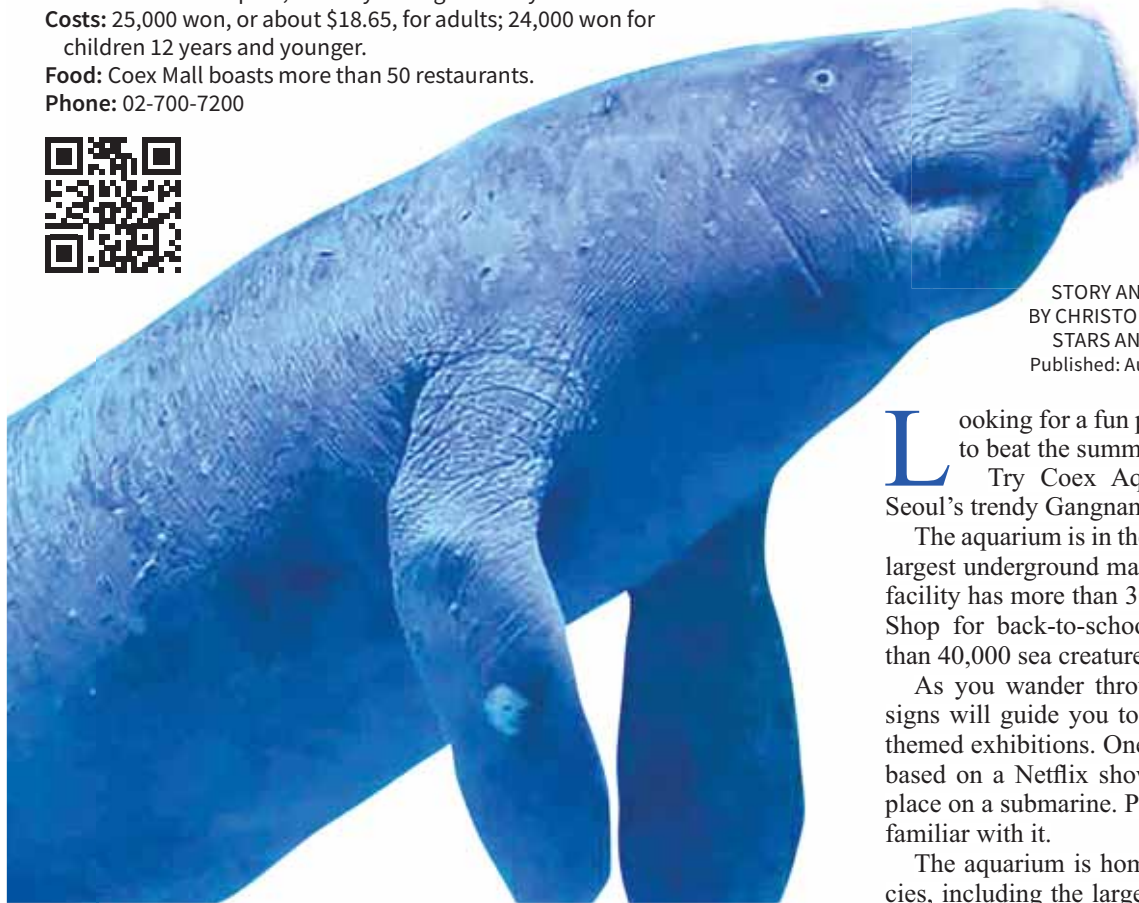
COEX mall home to awe-inspiring marine life

Coex Aquarium

Address: 513 Yeongdong-daero, Gangnam-gu, Seoul, South Korea
Directions: By train, take either Line 9 to Bongeunsa Station or Line 2 Samseong Station. From Samseong Station, enter Coex through exits 5 or 6. Follow the sign on the wall.
Times: 10 a.m. to 8 p.m., Monday through Sunday
Costs: 25,000 won, or about \$18.65, for adults; 24,000 won for children 12 years and younger.
Food: Coex Mall boasts more than 50 restaurants.
Phone: 02-700-7200



A Lego figure greets visitors.



Coex Aquarium in South Korea's capital is home to more than 600 species, including the legendary mermaid, the manatee and the country's largest shark.

STORY AND PHOTOS
BY CHRISTOPHER GREEN,
STARS AND STRIPES
Published: August 24, 2023

Looking for a fun place to go with your kids to beat the summer heat in South Korea? Try Coex Aquarium in the heart of Seoul's trendy Gangnam district.

The aquarium is in the Starfield Coex Mall, the largest underground mall in Asia. This four-floor facility has more than 300 stores and restaurants. Shop for back-to-school clothes and see more than 40,000 sea creatures, all in one place.

As you wander through this enormous mall, signs will guide you to the aquarium and its 14 themed exhibitions. One of these is "Octonauts," based on a Netflix show for children that takes place on a submarine. Parents of toddlers may be familiar with it.

The aquarium is home to more than 600 species, including the largest shark habitat in South

Korea, and offers a lot more than just fish. You'll also encounter squirrels, prairie dogs, sea lions and the legendary mermaid, the manatee.

One of the exhibitions was an enormous glass tank with sharks.

The highlight of the trip for me was the Submarine Tunnel, a tank through which visitors may walk and be surrounded by fish, sharks, sea turtles and other large aquatic creatures.

There are more than 180 creative and unique tanks at Coex. My favorite is a tranquil pool filled with orange, black and white koi.

One enormous tank is home to sharks, stingrays, clownfish and other tropical fish swimming in different directions.

At the end of the trip, visit the souvenir shop and take some memories home with you.

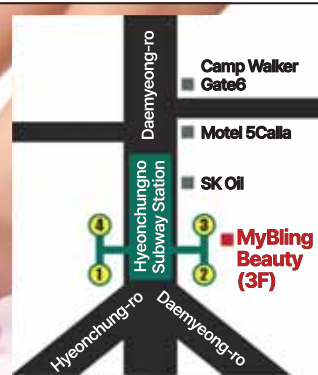
Coex Aquarium is a great way to spend an afternoon — it's fun, educational and keeps you out of the summer sun.

green.christopher@stripes.com
@ChrisJGreen8

Treat yourself to a Pedicure?

Make your day at My Bling Beauty

Located Near Camp Walker Gate6 / Military ID holders 20% DC
MANICURE, PEDICURE, ACRYLIC, GEL



3F, 216, Daemyeong-ro, Nam-gu, Daegu

Tue~Sat. 11:00~21:00

070-8747-2414
010-6376-2414

Myblingbeauty

Your votes. Your favorites. Your Best of the Pacific.

ANNOUNCING THE BEST OF 2023



Pick up the magazine or get it online



STARS AND STRIPES

www.yonseiuuro.com

Daegu Yonsei S Urology

American doctor qualification authentication (ECFMG 0-666-991) in compliance with the urologic medical specialist

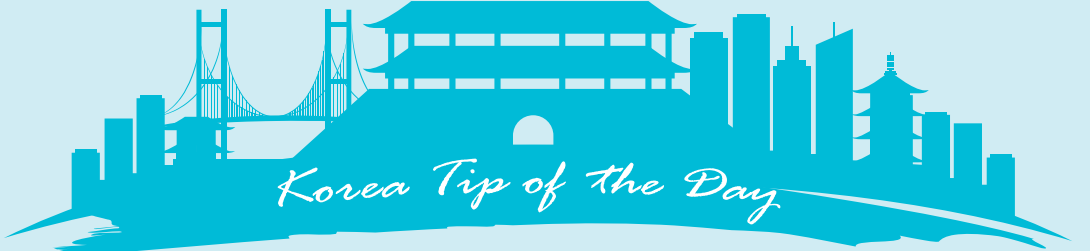
MEDICAL TREATMENTS

- STD Diseases
- Prostate Disorders
- Circumcision
- Vasectomy
- ED

Reservation and Consultation (053) 253-5825




TMO Seoul Station.



Stop by ROK-US Armed Forces Lounge

STORY AND PHOTOS BY HYEMIN LEE, STRIPES KOREA

As you commute around South Korea, you'll likely travel through many train stations. Among them, Seoul Station stands out as the busiest in the peninsula.

One Friday after work while waiting at this busy station to travel back to Pyeongtaek, the crowds made it nearly impossible to find a seat while waiting for a train.

But I remembered that as a civilian employee working for the U.S. military, I can access the TMO Lounge! The lounge is a good place to comfortably relax in the air conditioning, enjoy snacks and drinks, and charge my phone while waiting for my train.

TMO stands for the Transportation Movement Office, an office operated by the ROK Transportation Command to support the transportation of

ROK military personnel. ROK troops can book train or intercity bus tickets related to official duties or vacations through TMO.

The great news for those affiliated with the U.S. military is that each facility includes a lounge area where individuals, including Korean and US military troops, as well as civilian employees working on the base, can take a break. You can simply show your DOD ID or base access pass upon entry to TMO.

TMO lounges are available at most train stations throughout Korea, especially at major stations. If you're not sure about the presence or location of a TMO lounge at the station you're visiting, don't hesitate to ask any station staff. They will be able to easily guide you.

Whether you need a place to rest at the train station, temporarily store your luggage, or charge your phone, stop by a TMO lounge!
lee.hyemin@stripes.com

Who can use TMO Lounges?

- Korean military personnel and civilian employees
- US military personnel and DOD civilian employees on U.S. military bases
- Companions with the above individuals

Available free services

- Seats and tables for resting (outside food and eating allowed)
- Hot and cold water, beverages, coffee and snacks
- Phone charging station
- Changing rooms or lockers
- Korail or SRT ticket booking (availability varies depending by lounge)

Locations of TMO Lounges

- Seoul Station: Exit 3 on the 2nd floor, next to Story Way convenience store / 7 a.m. - 8:30 p.m.
- Yongsan Station: Opposite side of the entrance to I-Park Mall on the 4th floor / 8 a.m. - 8:30 p.m.
- Suwon Station: Near Exit 3 / 7 a.m. - 6 p.m.
- Pyeongtaek Station: Exit 2 on the 1st floor / 7 a.m. - 6 p.m.
- TMO is available at most of major train stations such as Cheongnyangni, Suseo, Dongtan, Chuncheon, Gangneung, Daejeon, Dong-daegu, Pohang, Busan, Cheonan-Asan Station, and Dong Seoul Terminal.



Snack station.



Lockers.



Phone charger station.



GSA in Korea

GSA Global Supply® is now storing and delivering approximately 750 high-demand National Stock Number (NSN) items formerly stored in and shipped from the continental United States. The change reduces delivery time to a few days from weeks or months.



Customers can order using GSA websites (GSA Global Supply or GSA Advantage!®) or via existing customer logistics platforms (e.g., GCCS-Army). GSA's systems recognize the items stocked in Korea and fulfill orders locally. Other items will ship from the mainland. An electronic catalog is available.



Ron Easley

The program does not replace existing retail stores managed by GSA in Korea. For more information, please contact your local Customer Service Director Ron Easley at ronald.easley@gsa.gov.

Check Out GSA's Korea Catalog!



Scan this QR code to view GSA's Korea catalog.



Stripes Korea is A Stars and Stripes Community Publication. This newspaper is authorized for publication by the Department of Defense for members of the military services overseas. However, the contents of Stripes Korea are unofficial, and are not to be considered as the official views of, or endorsed by, the U.S. government, including the Department of Defense or the U.S. Pacific Command. As a DOD newspaper, Stripes Korea may be distributed through official channels and use appropriated funds for distribution to remote and isolated locations where overseas DOD personnel are located. The appearance of advertising in this publication, including inserts or supplements, does not constitute endorsement of those products by the Department of Defense or Stars and Stripes. Products or services advertised in this publication shall be made available for purchase, use, or patronage without regard to race, color, religion, sex, national origin, age, marital status, physical handicap, political affiliation, or any other nonmerit factor of the purchaser, user, or patron.

5 tourist attractions in Busan worth a look

HAPS KOREA MAGAZINE

Busan is full of beautiful sites to see around the city. Here's five of the best places to check out during your visit.



Photos by Haps Korea Magazine

Seokbulsa

Well worth the long hike getting there, Seokbulsa is ranked No.1 for "must see things" in Busan by Lonely Planet. Also known as Byeongpung-am (Folding Screen Hermitage), the peacefulness is distinctive, like entering an air-conditioned room after roasting in the sweltering heat calm and contentment just envelope you.

Don't be misled by the name Seokbulsa is not a temple made of stone, unceremoniously perched on the mountain ledge. It is the mountain – embedded on the side of Geumjeongsan, cradled in the strong rock's clutch. A massive Buddhist figure stands in front of a polished stone prayer platform. The three sides of the temple are mountain rock transposed into towering walls, 40 meters tall, adorned with intricate carvings of six Buddhist figures. Numerous religious designs are etched directly into the mountainside, staring down at you from tremendous heights. Two small caverns house modest shrines where prayers and offerings can be made. The cave walls are cool and damp, and the darkness is cut only by flickering candles and the sunlight pouring through the entrance.

ADDRESS: San 2, Mandeok 1 dong, Buk-gu, Busan
TEL: 054-746-9933
OPENING HOURS: 7 a.m. -7 p.m.



WEBSITE



Beomosa Temple

Beomeosa is one of Korea's Great 5 Temples. This large, incredibly serene, temple complex is accessible by subway and then a short taxi or bus ride to the foothills. Founded in 678, the temple offers a unique view into the life of Korea's Buddhist Monks.

The original Beomeosa Temple building was lost during Imjinwaeran Invasion (Japanese Invasion of Korea in 1592) but was renovated in 1713, which remains as it now is. Daeungjeon is one of the most delicate and luxurious architectures of the Joseon Dynasty (1392~1910). There is Ijumun, the three-story pagoda with four pillars, built in the 9th century, and seven royal palace wings, pavilions, three gates, and eleven hermitages. Designated as a natural monument, the wisteria woods and valleys are most beautiful in May.

ADDRESS: 546 Cheongnyong-dong, Geumjeong-gu, Busan
TEL: 051-508-3122
OPENING HOURS: 8:30 a.m.-5:30 p.m.



WEBSITE

Nampodong International Market

If you are looking for some good shopping then you have to hit the enormous Nampodong International Market, also known as Gukje Market in Korean.

In the vast complex of booths and shops (both above and below ground in the subway station), you can get everything from Western wear to electronics to traditional Korean crafts. The area also has a wealth of great restaurants offering the full spectrum of Korean cuisine, as well as the now famous Kkangtong Night Market.

Whether you want to dress like a rock star, a modern dandy or a Harajuku heroine, Nampo-dong offers a wealth of options to the savvy shopper and the fashionably challenged alike.



ADDRESS: 36 Junggu-ro, Jung-gu, Busan
TEL: 051-245-7389
OPENING HOURS: 8:30 a.m.-10:30 p.m.



WEBSITE



Busan Citizen's Park

With five themes and 29 attractions, the park is the latest in the city's revitalization projects to attract visitors and establish itself as a world-class city. The site of Busan Citizen's Park was a racetrack during the Japanese colonial era, and after the independence of Korea, it became a U.S. military base, Camp Hialeah. In 2010, the area was returned to the Korean government, and then control was transferred to the city.

ADDRESS: 73 Simingonghan-ro, Beomjeon-dong, Busanjin-gu, Busan
TEL: 051-850-6000
OPENING HOURS: Daily 5 a.m.-11 p.m.



WEBSITE



Photo by geumjeong.go.kr

Geumjeong Mountain Fortress

Completed in the 29th year (1702) of the reign of King Sukjong the fortress is 17,377m long, and 1.5m to 3m high; it is the largest fortress in Korea. The inner and the outer walls were mainly built of natural stones. Where there were weaker portions, the Koreans reinforced the structure with large hand-carved stone blocks. The walls were about 17 kilometers in length and from 1.5 meters to 3 meters in height. The area surrounded by the fortress is about 8.2 square kilometers. The construction of the fortress began in 1701 at the recommendation of Jo Tae-dong, the Governor of Gyeong-sang-do province, of which Busan was and is a part, and was completed a year later. In 1707, the walls were built around the main structure of the fortress. It eventually fell to disuse due to the difficulty of maintaining such a large perimeter. After lying empty for a century, it was repaired in 1807, the seventh year of the reign of King Sunjo.

ADDRESS: Cheongnyong-dong, Geumjeong-gu, Busan
TEL: 051-519-4081
OPENING HOURS: 8:30 a.m.-5:30 p.m.



WEBSITE



Healing beauty esthetic

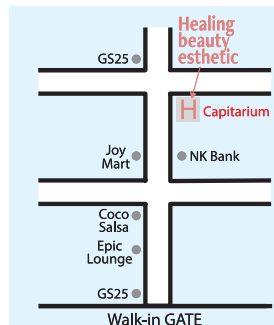
PLASMA is Hot in U.S.A. NOW

- Its hot is use now plasma cosmetic procedure
- Healing Beauty Humphrey has more than two years of experience
- no chemical. no injection. no side effects
- 100% use your own collagen regeneration power, and you can feel the effect of lifting slightly more every day until 10 months after the procedure.
- Lifting. Removing wrinkles. tightening pores
- Acne removal. Acne scars. Surgical scars
- All pigmentation (melasma, freckles, spots, warts)
- Itchy mycosis (eczema, psoriasis, atopy, athlete's foot)
- Hair loss

- MENU
- Microblading
 - Lifting by collagen
 - Removal wrinkles by collageng
 - Skin tone matching for stretch marks
 - High Frequency Muscle Massage
 - Diet Massage
 - Eyelash perm
 - Facial/aqua peel, diamond peel, dermabrasion, blackhead)
 - Whitening(facial, body)
 - MTS needling



Healing beauty esthetic
 힐링뷰티피부



Appointment & Learning @ plasmablast_anseong_healing
 010.9110.2619 @ yeon.kim.1016 @ yeon.kim.5015
 1F Capitarium (pascucci coffee) Anjung shopping-ro 52

Conference Room
Mustang Café
Business Center
Fitness Room

TURUMI LODGE

Cultivating a Legendary Experience
OSAN AIR BASE, KOREA

Do you have friends & family visiting soon? Or do you just need a time out?
 Make reservations at the most comfortable and affordable place in town. Room rate is \$63.00 per night for all rooms.
 Space Available reservations can be made for up to 120 day in advance. Turumi Lodge operation 24 hours, 7days a week.

DSN: 315-784-1844 Comm: 82-31-661-1844 E-mail: turumilodge.reservat@us.af.mil

www.dodlodging.net www.51fss.com

HAPPENINGS OFF BASE FESTIVALS



Moonlight Tour at Changdeokgung Palace



HOMEPAGE

DATE: Until Oct. 22
ADDRESS: 99, Yulgok-ro, Jongno-gu, Seoul
INTRODUCTION: The Moonlight Tour at Changdeokgung Palace is a high-quality cultural

event held at Changdeokgung Palace, a UNESCO World Heritage. The tour offers a unique opportunity to witness and experience palatial beauty under the moonlight.

ADMISSION/FEES: 30,000 won

ONLINE RESERVATION: ticket.11st.co.kr



Korean Folk Village Evening Festival



HOMEPAGE

DATE: Until Nov. 12
ADDRESS: 90, Minsokchon-ro, Giheung-gu, Yongin-si, Gyeonggi-do
INTRODUCTION: The Korean Folk Village Evening Festival takes place on

weekends & public holiday evenings until 21:30 to show the beauty of traditional houses at night. The festival also showcases "Yeonbun," an extravagant multi-media performance, and a walk-through haunted house experience. Several other exciting and fun activities are prepared to entertain visitors.

ADMISSION/FEES: After 4 promotion discount: 17,000 won

* Applies to visitors who visit after 16:00



Bupyeong Pungmul Festival



HOMEPAGE

DATE: Sept. 22 – 24
ADDRESS: 166, Bupyeong-daero, Bupyeong-gu, Incheon
LOCATION: Bupyeong-daero, Bupyeong Art Center
INTRODUCTION: Bupyeong

Pungmul Festival started in 1997 to establish the identity and pride of Bupyeong as well as develop and promote the success of the traditional culture. The festival reproduces a scene of Bupyeong farming culture and shares the feelings of Pungmul (farmer's music) with many visitors.

PROGRAMS:

Programs: Concerts, opening/closing ceremony, drone show, etc.

ADMISSION/FEES: Free



Wonju Dancing Carnival



HOMEPAGE

DATE: Sept. 22 – 24
ADDRESS: 170, Dangu-ro, Wonju-si, Gangwon-do
INTRODUCTION: Wonju Dynamic Dancing Carnival is an international festival led by the citizens from

the preparation of the event to the stage performances. Dynamic dance parade performances will take place on a giant 100-meter-long and 15-meter-wide runway.

Jinan Red Ginseng Festival



HOMEPAGE

DATE: Sept. 22 – 24
ADDRESS: 160, Maisan-ro, Jinan-gun, Jeollabuk-do
INTRODUCTION: Jinan Red Ginseng Festival is held every October in the northern region of Maisan

Mountain which has the title of being the only red ginseng special zone in Korea. With various red ginseng-related programs and cultural activities, visitors are sure to enjoy the festival with this energetic food. The festival also offers discounted prices on Jinan red ginseng for festival-goers.

ADMISSION/FEES: Free (fees vary by programs)



Great Baekje Festival



HOMEPAGE

DATE: Sept. 23 – Oct. 9
ADDRESS: 135, Baekgang-ro, Buyeo-gun, Chungcheongnam-do
INTRODUCTION: Great Baekje Festival first started in 1955 and aims to bring the

history and culture of the Baekje era to life, taking place at UNESCO-recognized sites. Visitors can enjoy various programs while traveling back to the Baekje era. **ADMISSION/PARTICIPATION FEES:** Free (Separate fees may apply)

Suwon Hwaseong Cultural Festival



HOMEPAGE

DATE: Sept. 23 – Nov. 4
ADDRESS: 825, Jeongjo-ro, Paldal-gu, Suwon-si, Gyeonggi-do
LOCATION: Suwon Hwaseong Fortress
INTRODUCTION: Suwon

Hwaseong Cultural Festival is Suwon's landmark festival held every October at Suwon Hwaseong Fortress, a UNESCO World Cultural Heritage site built to commemorate King Jeongjo's filial piety and dream of national prosperity and military power.

ADMISSION/FEES: Fees may apply to certain programs

Andong Mask Dance Festival



HOMEPAGE

DATE: Oct. 2 – 9
ADDRESS: 200, Chukjejang-gil, Andong-si, Gyeongsangbuk-do
INTRODUCTION: Andong Mask Dance Festival takes place in Andong, home of

the UNESCO World Heritage designated Andong Hahoe Village. The festival includes various cultural performances including Korea's mask dance drama, an intangible cultural heritage, and mask dance performances from around the world. In addition to watching performances, visitors can also participate in a variety of hands-on experience programs to learn more about the dances, masks, and related culture.

ADMISSION/FEES: Refer to the website

Cheonan World Dance Festival



HOMEPAGE

DATE: Oct. 5 – 9
ADDRESS: 208, Beonyeong-ro, Sokcho-si, Gangwon-do
INTRODUCTION: The Cheonan World Dance Festival attracts some of the best dancers from around

the world to celebrate the traditional dances, songs, and costumes of their countries. Visitors can watch very polished traditional dance performances from all around the world, as well as an electrifying dancing competition.

ADMISSION/FEES: Free

Jinju Namgang Yudeung (Lantern) Festival



HOMEPAGE

DATE: Oct. 8 – 22
ADDRESS: 626, Namgang-ro, Jinju-si, Gyeongsangnam-do
INTRODUCTION: Jinju Namgang Yudeung Festival originates from the floating

lanterns that were used during the Jinjuseong Fortress Battle of the Imjin War (1592-1598) as a military strategy to prevent Japanese troops from wading the Namgang River. The highlights of the festival are the floating of lanterns along the Namgang River and the parade of lanterns created by local students themselves. In addition, the festival has various events and programs including a fireworks show, water lighting show, cultural performances, and more. **ADMISSION/FEES:** Free (separate fees may apply)



Yeongdong Nangye Korea Traditional Music Festival



HOMEPAGE

DATE: Oct. 12 – 15
ADDRESS: 117, Yeongdong healing-ro, Yeongdong-gun, Chungcheongbuk-do
INTRODUCTION: Yeongdong, the hometown of the Joseon dynasty's gugak (traditional

music) virtuoso Park Yeon, is the center of traditional Korean music. Every year, the Yeongdong Nangye Korea Traditional Music Festival, named after Park's pen name, Nangye, is held in the area. In addition to featuring various exhibitions and experience programs centered on traditional Korean music, the Yeongdong Nangye Traditional Music Festival offers various events including Eoga Parade, Jongmyojerye Ritual, and other traditional music performances, making and playing a traditional musical instruments in order to offer the chance at connecting through gugak (traditional Korean music). Also, Yeongdong Wine Festival is held at the same time. **ADMISSION/FEES:** Free (fees may apply to programs)

Yeosu Ogok Naru Festival



HOMEPAGE

DATE: Oct. 20 – 22
ADDRESS: 7, Silleuksa-gil, Yeosu-si, Gyeonggi-do
INTRODUCTION: Yeosu Ogok Naru Festival is a great place for visitors to see Yeosu's local agricultural

products, such as rice and sweet potatoes. Various activities and events for the whole family are available as well as a market where visitors can buy local products at affordable prices. **ADMISSION/FEES:** Free

1330 TRAVEL HOTLINE: +82-2-1330 (Korean, English, Japanese, Chinese)



NOTE: Festival dates and info subject to change.

COPYRIGHTS ©KOREA TOURISM ORGANIZATION. ALL RIGHTS RESERVED www.visitkorea.or.kr

Stripes Sports Trivia

The first National Table Tennis Championship was held from Jan. 24 to Jan. 29, 1938 where the US men's team took the bronze and took the gold for Men's Doubles. Where was the event held?

Answer

Royal Albert Hall and Wembley Empire Pool and Sports Arena, London

100 Hours Fundamental Course

Permanent Make-up Education & Training Course P.M.U Curriculum

Infection Control, Bloodborne Pathogen Pigments/Inks consist, Technical Application, Anatomy & Physiology, Diseases & Disorders, Regulations, Legal, Client Management, Documentation.

Permanent Make-up Services

Eyebrow, Eyeliner, Lip Blush, Tint Lip, Scalp Micropigmentation, Paramedical, Tattoo, Eyelash Lift, Eyelash Extension, Skin Care.

Military to civilian life After The Military

New Life Challenges and Successful Life After Discharge
Challenge yourself to a business that makes people beautiful.

Website sppc.org
koreaspccp.kr

F4, 193, Gumi-ro, Bundang-gu, Seongnam-si, Gyeonggi-do, Republic of Korea - zip code 13621
Phone: +82-10-7139-3929 Mobile: +82-10-3897-0717

Beautiful Places To Travel in Yeongwol



달달영월 YouTube 달달영월 Instagram dal dal yeongwol

Crossword

by Margie E. Burke

ACROSS

- 1 Spinning sound
- 5 SWAT operation
- 9 Put to shame
- 14 Top of the line
- 15 Shooter's need
- 16 Particular occasion
- 17 University mil. group
- 18 Toy weapon
- 20 Grade of silver
- 22 Gas guzzler
- 23 Cupid, for one
- 25 Decorates a cake
- 26 Blazing
- 28 Superman from '78
- 30 Fighting mad
- 31 Its flag has two green stars
- 32 Equinox mo.
- 35 Pass on, formally
- 37 Slant
- 39 Meet with
- 40 Use a divining rod
- 42 Indianapolis team
- 43 Ruckus
- 44 NYPD descriptor
- 45 Legal rights org.
- 48 Artist's sketches
- 50 Monty Python member
- 52 Skillfully evade
- 55 "The Twilight Zone" host
- 57 Lifted and threw
- 58 Philly footballer
- 59 Barely beat
- 60 Change for a five
- 61 Knitter's purchase
- 62 Lab procedure
- 63 Cover at a KOA

1	2	3	4	5	6	7	8	9	10	11	12	13	
14					15				16				
17					18				19				
20				21					22				
		23						24			25		
26	27						28			29			
30						31					32	33	34
35						36			37			38	
39				40				41			42		
					43						44		
45	46	47				48			49				
50						51						53	54
55								56				57	
58												60	
61								62					63

Copyright 2023 by The Puzzle Syndicate

DOWN

- 1 The "W" in V.F.W.
- 2 Laugh-a-minute
- 3 Weave
- 4 Craft anew
- 5 Forcible seizure
- 6 Make changes to
- 7 Mental pictures
- 8 Old PC platform
- 9 Unknown author
- 10 Wahlberg film, "___ Nights"
- 11 Prank
- 12 Film part
- 13 "___ Johnny!"
- 19 Legalese word
- 21 Citrus drink
- 24 Chill-inducing
- 26 Helpers
- 27 Priceless?
- 29 Salk discovery
- 31 Waste conduit
- 32 Landmark event
- 33 Kitchen invaders
- 34 Sabbath activity
- 36 Welding alloy
- 38 It has a big payoff
- 41 Like many resorts
- 43 Swiss granola
- 44 Act antsy
- 45 60's sitcom, "Green ___"
- 46 Dagger's partner
- 47 Narrow shelf
- 49 Tim Daly series
- 51 Witnessed
- 53 Word before keel or break
- 54 Termite, e.g.
- 56 Say okay

Answers to Previous Crossword:

C	H	O	M	P	A	B	L	E	E	L	B	A			
R	E	C	U	R	R	E	I	N	N	E	O	N			
E	N	E	M	Y	D	A	M	A	S	C	E	N	E		
S	C	A	B	B	O	N	E	M	A	R	R	O	W		
S	E	N	A	T	O	R	S	O	L	O					
L	I	I	I	S	T	R	E	A	M	E	R				
F	B	I	P	L	A	T	O	S	C	A	L	E			
A	U	N	T	S	P	I	N	S	H	I	S	S			
C	R	E	W	S	P	L	E	A	S	N	E	T			
E	N	R	O	L	L	E	E	T	A	L	C				
						T	I	E	R	P	I	T	E	O	U
A	B	D	I	C	A	T	I	O	N	M	U	T	E		
P	R	O	M	E	N	A	D	E	A	O	R	T	A		
S	A	M	E	T	I	L	T	I	N	S	E	T			
E	Y	E	D	O	N	E	S	M	Y	E	R	S			

DID YOU KNOW?



In South Korea, a fashion trend called "Couple Look" has become popular among young couples. The concept is the same as "twinning," where couples wear matching outfits and accessories.

Hangul of the week **남자친구**
Namja-chingu (Boyfriend)

Language Lesson

You look great today!

Neo oneul meot-jida!
(너 오늘 멋지다!) - Informal



Getting out of the Military?

You should start the Transition Assistance Program

18 Months before ETS
24 Months before Retirement

*Must start 12 months before ETS

To Get Started

Go to: <https://portal.armytap.army.mil>



Or visit us in person

USAG Humphreys

Maude Hall, W-301

DSN: 757-2101

Comm: 05-033-57-2101

Or visit your local TAP Center

SUDOKU

Edited by Margie E. Burke

Difficulty: Medium

					1			
		1				3	5	
6			5	4		7		2
	2	7	9	8				4
	4				5			6
		9						
						4		
	1				8			2
	8	6		9	3	5	7	

HOW TO SOLVE:

Each row must contain the numbers 1 to 9; each column must contain the numbers 1 to 9; and each set of 3 by 3 boxes must contain the numbers 1 to 9.

Answer to Previous Sudoku:

5	7	3	2	6	4	1	8	9
6	8	4	9	7	1	5	2	3
2	9	1	8	3	5	6	7	4
4	1	5	6	2	3	8	9	7
8	6	7	5	4	9	3	1	2
3	2	9	1	8	7	4	5	6
9	4	2	3	5	8	7	6	1
1	3	8	7	9	6	2	4	5
7	5	6	4	1	2	9	3	8

Copyright 2023 by The Puzzle Syndicate

Exploring the Beauty of the Pacific



Available throughout the Pacific in the September 15th issue of Stars and Stripes.

STARS AND STRIPES



UPCOMING EVENTS

AT DRAGON HILL LODGE



SEP 23

WINE FEST

Indulge in the finest wines from around the world and expand your palate. Join us for a leisurely afternoon of wine tasting and a variety of finger foods right in our hotel lobby.



OCT 6-8

OKTOBERFEST

The Dragon has the best Oktoberfest tent in Korea! Come for authentic Bavarian cuisine, our very own crafted Märzen beer, German yodeling bands, bouncy castles, games, and more!



DEC 31

NEW YEAR'S EVE PARTY

Don't miss out on the Greatest Party of the Year! Enjoy music, food, and dance throughout the whole hotel. RSVP early!



YOUR U.S. MILITARY RESORT IN SEOUL

USAG YONGSAN

Our American style guestrooms and suites make a welcoming home base for all your Seoul searching. Whether it's a short staycation or a long stay, you will find the best deal for U.S. Military Service Members, Families, and DoD Civilians on our website.

www.dragonhilllodge.com

reservations@dragonhilllodge.com

Call DSN: #315-738-2222 or #02-790-0016 ext.1

Always Exciting!
Visit Boryeong

Boryeong Underwater Landscape Lighting Event

Longest-underwater tunnel in Korea and also the longest national highway tunnel with a total length of 6,927m.

Boryeong Culture Tourism